

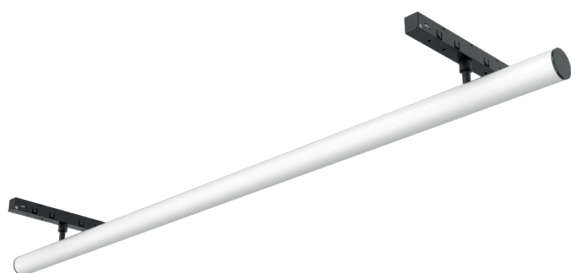
MAGNETIC TRACK LIGHT

LX-DL-M20CD(A)

IP 20	CRI >90	SDCM <3 Step	DC48V
-----------------	-------------------	------------------------	--------------

		CASAMBI
---	--	----------------

	CE	RoHS	50000h
---	-----------	-------------	---------------



- Material: AL6063-T5, spraying surface
- Coating: Black (RAL9005)
- Length: 600mm/900mm/1200mm optional
- CCT: 2700/3000/3500/4000K optional
- Light efficiency: 100 lm/W
- Lighting direction: downward
- Application: Indoor



luxio
L I G H T I N G

www.luxio-lighting.com

References

Reference	Input Voltage	Type Power	Max Power	Luminous flux	CRI	CCT/K	Beam Angle	IP Rating	Length
LX-DL-M20CD (A)	48VDC	12W	13.2W	1095lm	>90	2700K	200°x110°	IP20	600mm
				1115lm		3000K			
				1150lm		3500K			
				1200lm		4000K			
		18W	19.8W	1645lm		2700K			900mm
				1675lm		3000K			
				1720lm		3500K			
				1800lm		4000K			
		24W	26.4W	2195lm		2700K			1200mm
				2235lm		3000K			
				2295lm		3500K			
				2400lm		4000K			

1. The output data is based on the testing result of Ra90,4000k luminaires;
2. The tolerance of output data can be vary up to 10%;
3. The output data is typical value.

Dimensions

