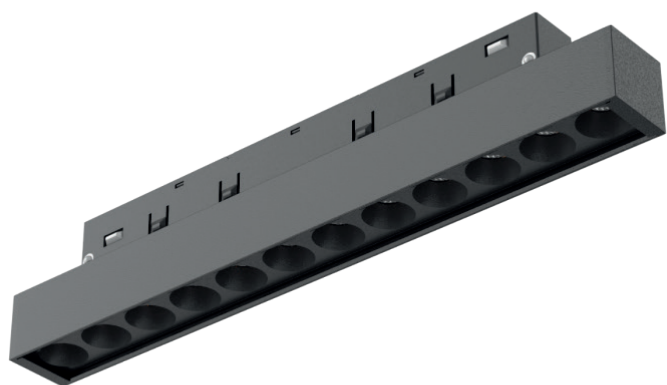


MAGNETIC TRACK LIGHT



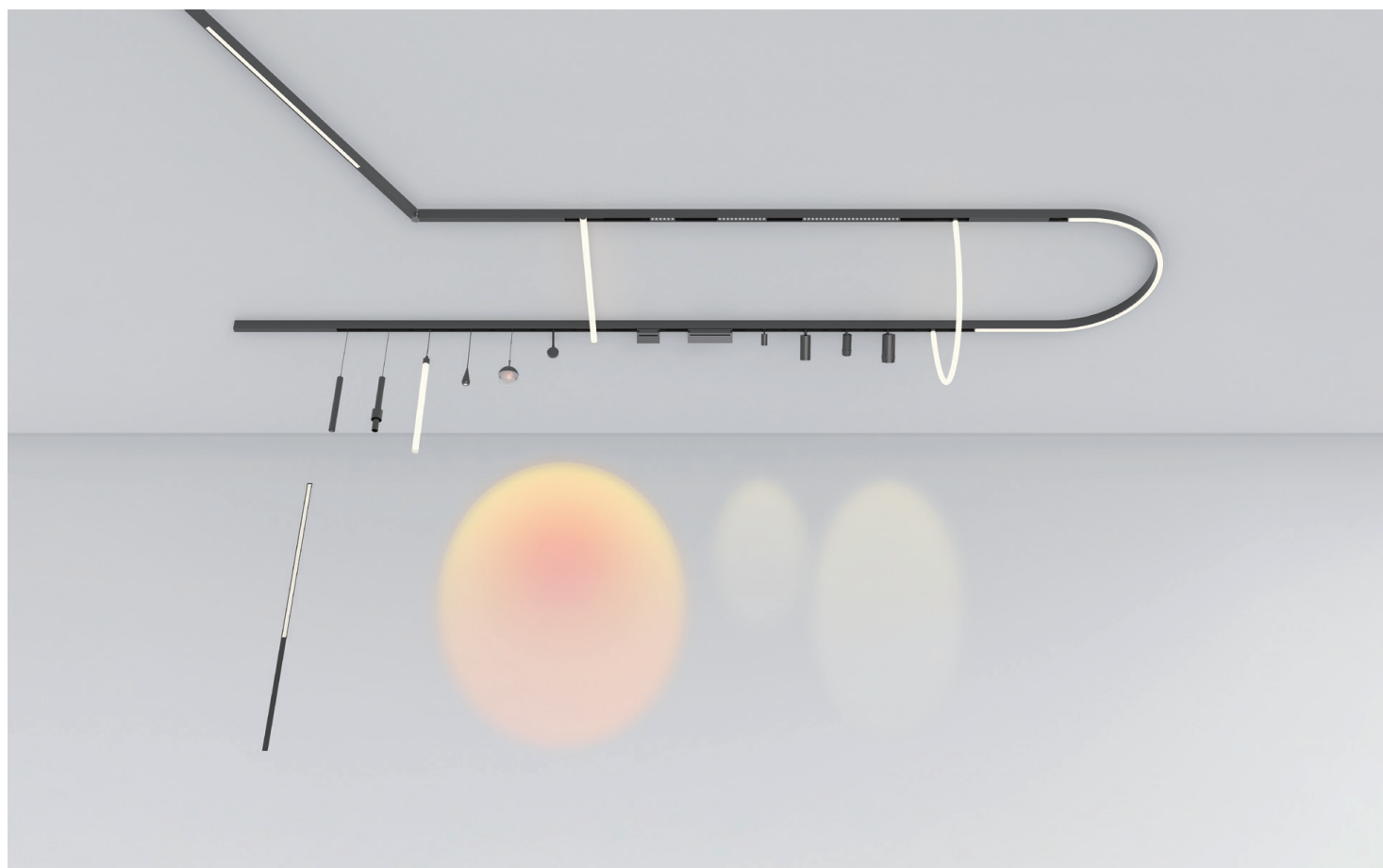
LX-DL-M20G

IP 20	CRI >90	SDCM <3 Step	DC48V
-----------------	-------------------	------------------------	--------------

		CASAMBI
---	--	----------------

	CE	RoHS	50000h
---	-----------	-------------	---------------

- Material: AL6063-T5, spraying surface
- Coating: Black (RAL9005)
- Length: 110mm/220mm/440mm optional
- CCT: 2700/3000/3500/4000K optional
- Light efficiency: 78/75 lm/W
- Lighting direction: downward
- Application: Indoor



References

Reference	Input Voltage	Type Power	Max Power	Luminous flux	CRI	CCT/K	Beam Angle	IP Rating	Length
LX-DL-M20G	48VDC	6W	6.6W	430lm	>90	2700K	30°	IP20	110mm
				440lm		3000K			
				450lm		3500K			
				470lm		4000K			
				410lm		2700K	55°		
				420lm		3000K			
				430lm		3500K			
				450lm		4000K			
				12W		13.2W	860lm		
		875lm	3000K						
		900lm	3500K						
		940lm	4000K						
		820lm	2700K				55°		
		840lm	3000K						
		860lm	3500K						
		900lm	4000K						
		24W	26.4W				1710lm		2700K
				1740lm		3000K			
				1790lm		3500K			
				1870lm		4000K			
				1645lm		2700K	55°		
				1675lm		3000K			
				1720lm		3500K			
				1800lm		4000K			
						1710lm	>90	2700K	30°
		1740lm	3000K						
		1790lm	3500K						
		1870lm	4000K						
		1645lm	2700K			55°			
		1675lm	3000K						
		1720lm	3500K						
		1800lm	4000K						

1. The output data is based on the testing result of Ra90,4000k luminaires;
2. The tolerance of output data can be vary up to 10%;
3. The output data is typical value.

Dimensions

