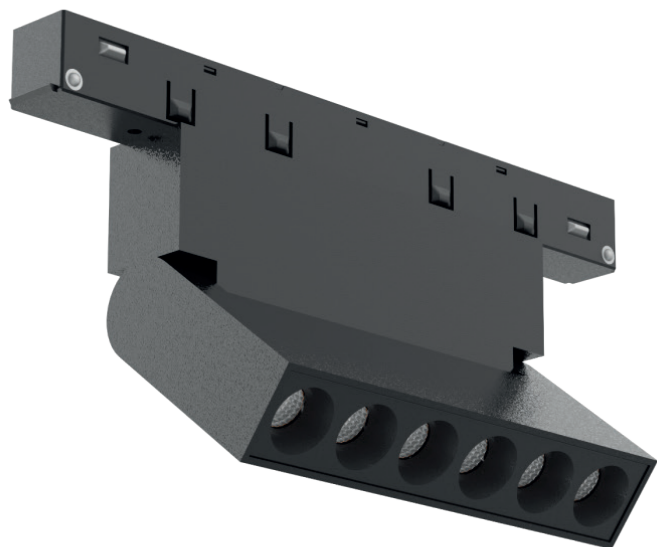


MAGNETIC TRACK LIGHT



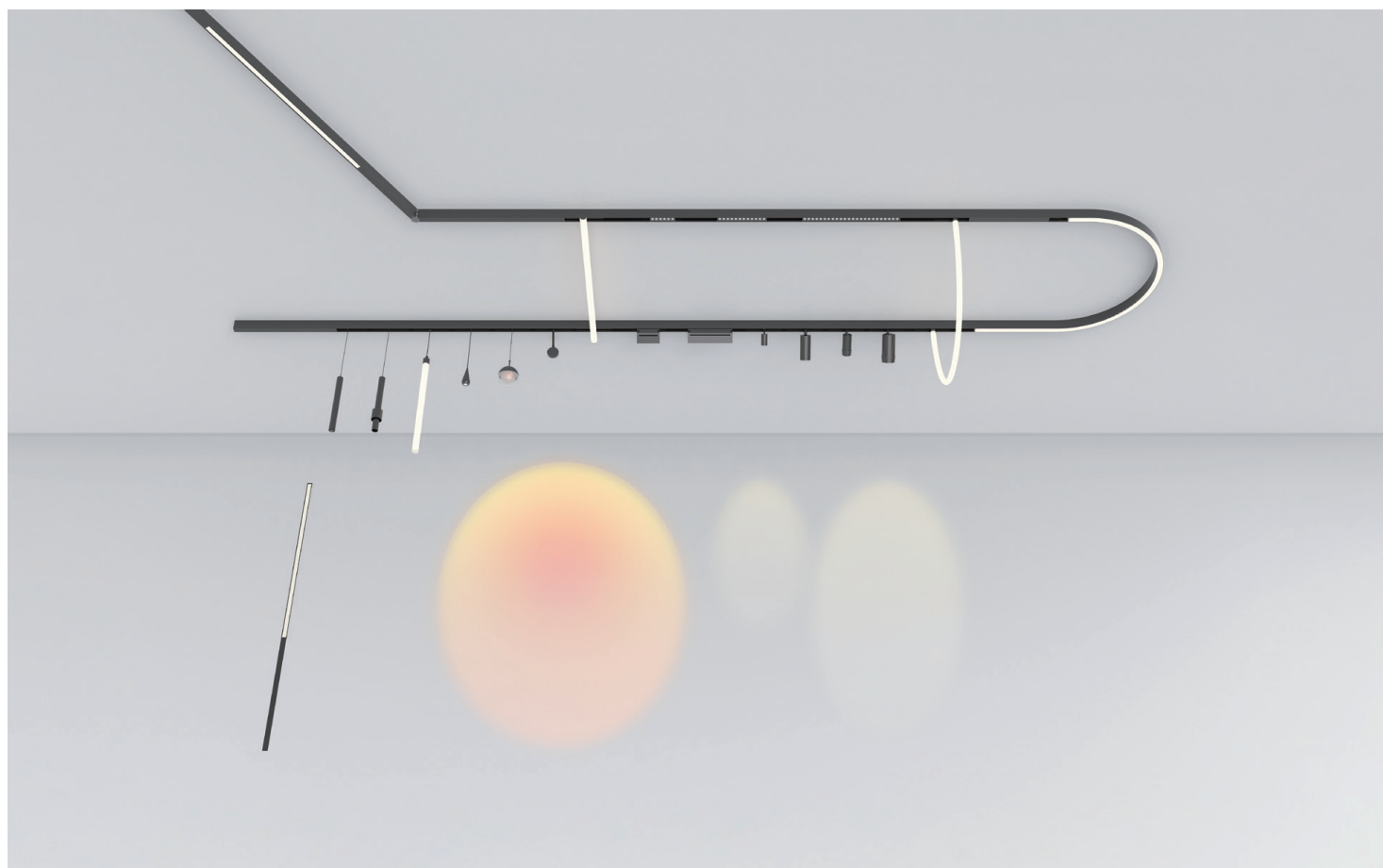
LX-DL-M20G(A)

IP 20	CRI >90	SDCM <3 Step	DC48V
-----------------	-------------------	------------------------	--------------

		CASAMBI
--	--	----------------

	CE	RoHS	50000h
--	-----------	-------------	---------------

- Material: AL6063-T5, spraying surface
- Coating: Black (RAL9005)
- Length: 110mm/220mm optional
- CCT: 2700/3000/3500/4000K optional
- Light efficiency: 70/67 lm/W
- Lighting direction: downward
- Application: Indoor



References

Reference	Input Voltage	Type Power	Max Power	Luminous flux	CRI	CCT/K	Beam Angle	IP Rating	Length			
LX-DL-M20G -(A)	48VDC	6W	6.6W	385lm	>90	2700K	30°	IP20	110mm			
				390lm		3000K						
				400lm		3500K						
				420lm		4000K						
				365lm		2700K						
				370lm		3000K						
		385lm	3500K									
		400lm	4000K									
		12W	13.2W	770lm		30°	2700K					
				780lm			3000K					
				805lm			3500K					
				840lm			4000K					
				730lm			2700K					
				745lm			3000K					
		765lm	3500K									
		800lm	4000K									
											40°	220mm
780lm	3000K											
805lm	3500K											
840lm	4000K											
730lm	2700K											

1. The output data is based on the testing result of Ra90,4000k luminaires;
2. The tolerance of output data can be vary up to 10%;
3. The output data is typical value.

Dimensions

