

PROFIL LIGHT



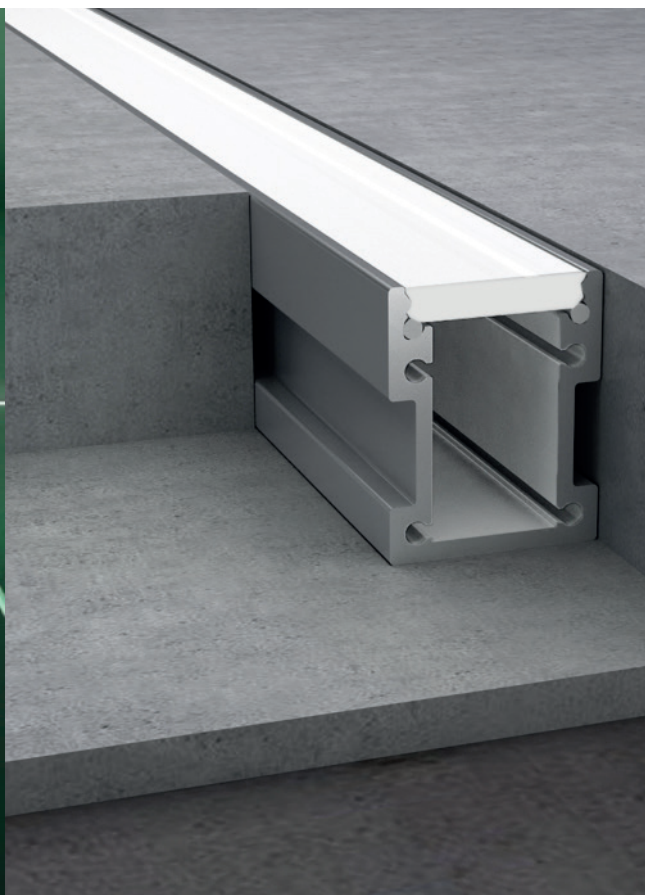
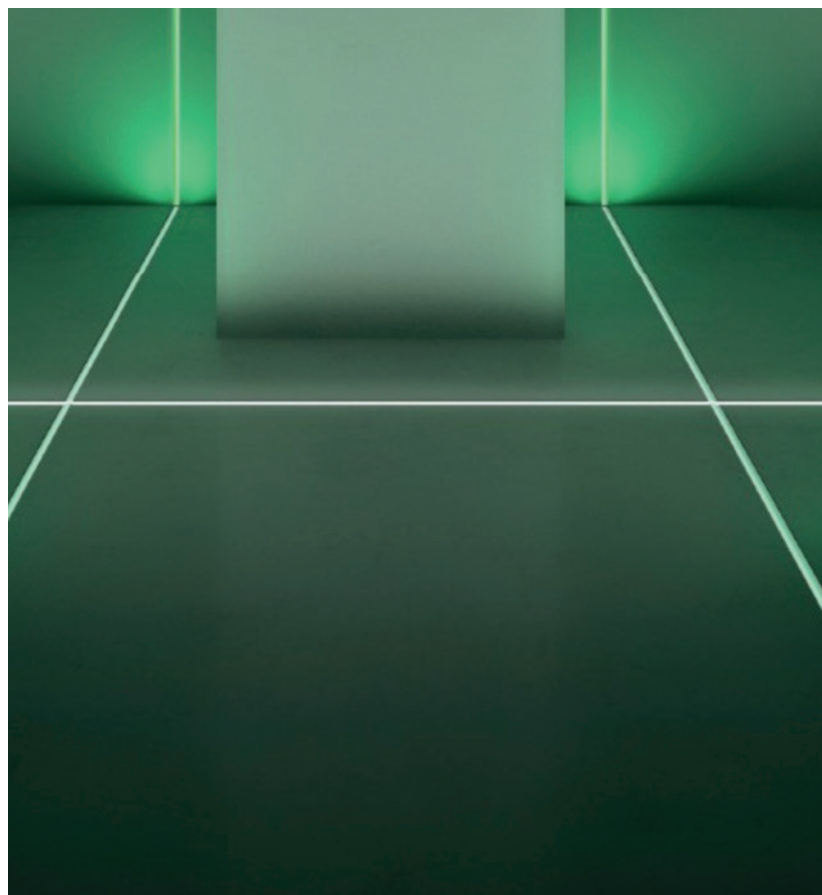
LX-PL-LS2126

24V	CRI >80/95	PF >0.9	IK 10	IP 65
-----	---------------	------------	----------	----------





LX-PL-LS2126



- Apply to outdoor ground, Can be used to outline and decorating
- AL6063-T5 aluminum profile with high-quality surface treatment.
- Close-fitting design without screw, make installation more convenient.
- IK10, IP65 waterproof level design , can be used widely in indoor and outdoor floors.



Standard Configuration

Picture	Item	Parameter	Model
	Profile	Profile weight : 1.16kg/2.5m Size : L2500*W21.4*H27mm Material : AL6063-T5 Surface processing : Anodizing	/
	Cover	Type: Frosted diffuser Material : PC Light transmittance : 75% Size : L2500*W18*H3.4mm PC Feature : The diffuser will extend (shrink) 0.8mm/m when the temperature rises (drops) 10°C.	/
	End caps	Size : L27*W21.4*H5mm Material : PC	LX-EC-LS2126

Optional Accessories

Picture	Item	Parameter	Model
	Flexible strip	Material : FPC,CCT : 2700/3000/4000/6000K ; CRI >90 ; Voltage : 24V ; Power : 6.6W/m ; Lumen : 710lm/m ; Width : 8mm ; Minimum cutting unit : 7LEDs/50mm ;	LX-ST-D6140-24V - 8mm
	End caps with hole	Size : L27*W21.4*H5mm Material : PC	LX-EC-LS2126

Fixings



Dimensions

