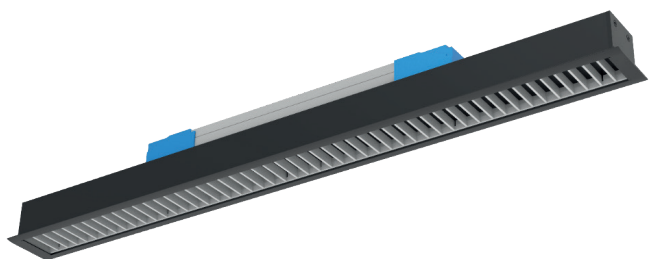



PROFIL LIGHT

LX-PL-LE40BD



IP 20	CRI 80/90	UGR <19	SDCM <3 Step	AC220V ~240V	 2
-----------------	---------------------	-------------------	------------------------	------------------------	--

 5 GARANTIE		RoHS	50000h
--	--	-------------	---------------

- Material: AL6063-T5, spraying surface
- Coating: Black (RAL9005), White (RAL9003), Champagne Gold, Rose Gold, Matt Green (RAL6019), Matt Orange (RAL2008), Matt Yellow (RAL1004), Matt Blue (RAL5012)
- Length: 1200mm/1500mm/1800mm/2400mm optional
- CCT: 2700/3000/3500/4000/5000/6500/3000-6500K optional
- Beam angle: 65°
- U G R: UGR≤19(X=4H,Y=8H)
- Light efficiency: 65 lm/W
- Lighting direction: downward
- Application: Indoor



Luminaire Parameters

Version	Model	Length	Input Voltage (V)	Max. Current (A)	Type Power (W)	Max. Power (W)	CRI	CCT	Lumen (LM)
Normal / Emergency	LX-PL-LE40BD -1200	1200mm	200-240 VAC	0.15	28.0	30.8	>80	2700K	1695lm
								3000K	1730lm
								3500K	1765lm
								4000K	1820lm
								5000K	1820lm
								6500K	1820lm
							>90	2700K	1455lm
								3000K	1485lm
								3500K	1520lm
								4000K	1565lm
								5000K	1565lm
								6500K	1565lm
Normal	LX-PL-LE40BD -1500	1500mm	200-240 VAC	0.18	34.0	37.4	>80	2700K	2055lm
								3000K	2100lm
								3500K	2145lm
								4000K	2210lm
								5000K	2210lm
								6500K	2210lm
							>90	2700K	1770lm
								3000K	1805lm
								3500K	1845lm
								4000K	1900lm
								5000K	1900lm
								6500K	1900lm

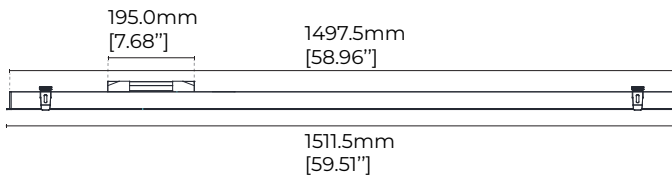
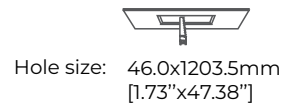
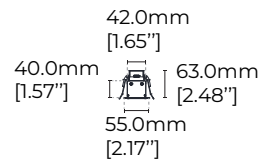
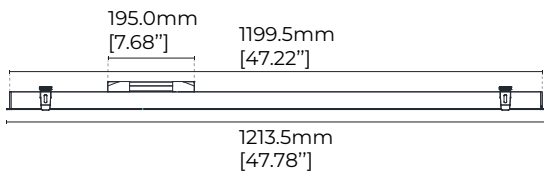
Normal	LX-PL-LE40BD -1800	1800 mm	200-240 VAC	0.21	40.0	44.0	>80	2700K	2420lm
								3000K	2470lm
								3500K	2520lm
								4000K	2600lm
								5000K	2600lm
								6500K	2600lm
	LX-PL-LE40BD -2400	2400 mm	200-240 VAC	0.29	56.0	61.6	>80	2700K	2080lm
								3000K	2125lm
								3500K	2170lm
								4000K	2235lm
								5000K	2235lm
								6500K	2235lm
	LX-PL-LE40BD -2400	2400 mm	200-240 VAC	0.29	56.0	61.6	>90	2700K	3385lm
								3000K	3460lm
3500K								3530lm	
4000K								3640lm	
5000K								3640lm	
6500K								3640lm	
LX-PL-LE40BD -2400	2400 mm	200-240 VAC	0.29	56.0	61.6	>90	2700K	2910lm	
							3000K	2975lm	
							3500K	3035lm	
							4000K	3130lm	
							5000K	3130lm	
							6500K	3130lm	

1. The above parameters were tested based on 1.2M(3.94') standard products;

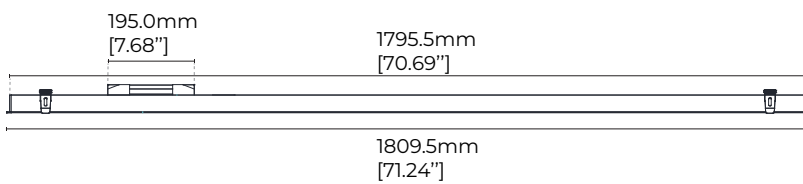
2. luminous flux is allowed to have a $\pm 10\%$ error range;

3. The above parameters are typical values.

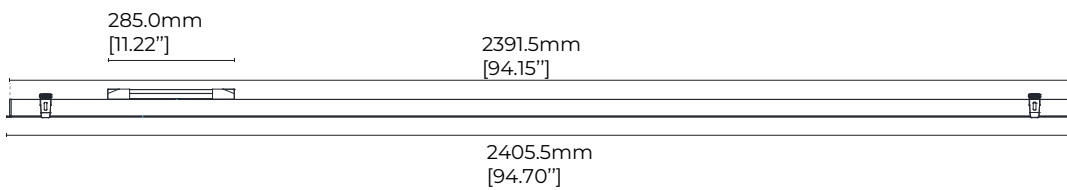
Dimensions



46.0x1501.5mm
[1.73"x59.11"]



46.0x1799.5mm
[1.73"x70.85"]



46.0x2395.5mm
[1.73"x94.31"]

Note: Luminaires length shown above indicates the length of profile + thickness of 2 end caps, where each end cap is 10.5mm thick, 2 end caps is 21mm thick in total.

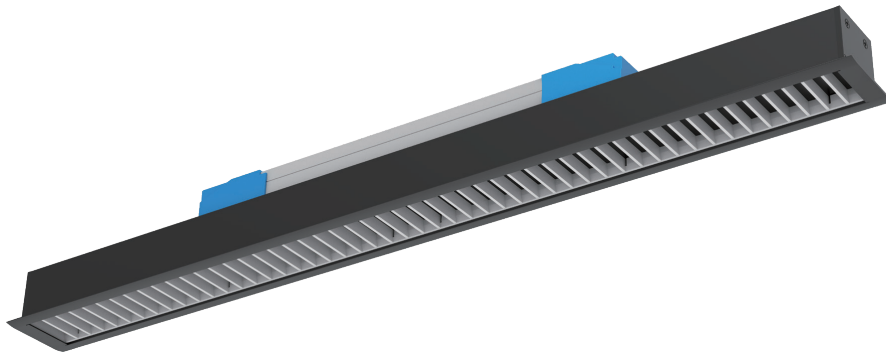
Product Accessories Information

Picture	Section size	Name	Description	Model	Note
	/	Splicing bar (external)	Size:L80.0*W10.0*H2.0mm [Inch size:L3.15"*W0.39"*H0.08"]	LX-EX-E1	Splicing accessory
		L-shaped corner (60°)	Material:AL6063-T5 Size:L200*W173.2*H40.0mm [Inch size:L7.87"*W6.82"*H1.57"]	LX-L60-LE40	Recessed standard corner
		L-shaped corner (90°)	Material:AL6063-T5 Size:L200*W200*H40.0mm [Inch size:L7.87"*W7.87"*H1.57"]	LX-L90-LE40	
		L-shaped corner (120°)	Material:AL6063-T5 Size:L200*W200.7*H40.0mm [Inch size:L7.87"*W7.90"*H1.57"]	LX-L120-LE40	
		Y-shaped corner	Material:AL6063-T5 Size:L373.9*W323.8*H40.0mm [Inch size:L14.72"*W12.75"*H1.57"]	LX-Y120-LE40	
		X-shaped corner	Material:AL6063-T5 Size:L400*W400*H40.0mm [Inch size:L15.75"*W15.75"*H1.57"]	LX-X90-LE40	

Version Type

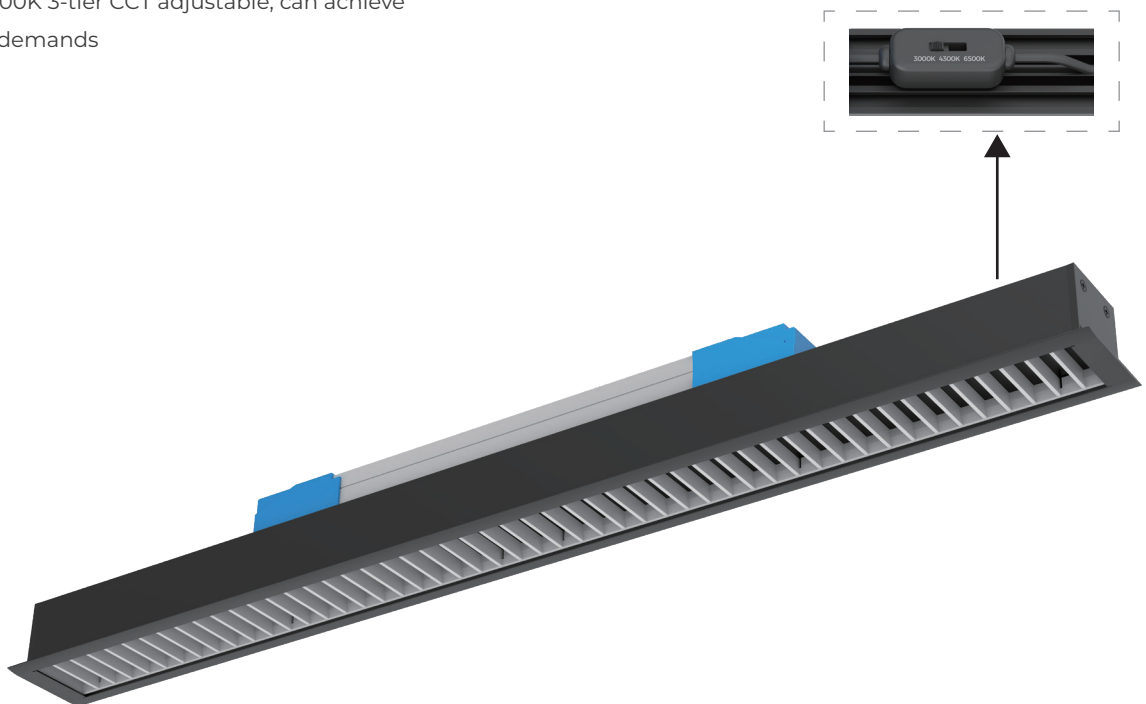
[Normal]

- 65lm/W (Normal)
- Dimming method: Non / 1-10V / DALI+push



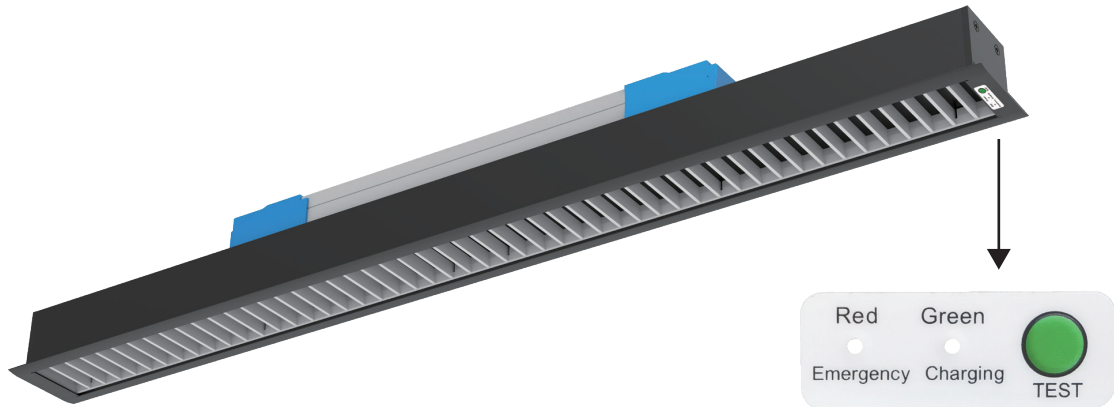
Dial switch CCT control

- Dimming method: Non/1-10V/ DALI+push optional
- 3000K/4300K/6500K 3-tier CCT adjustable, can achieve general lighting demands



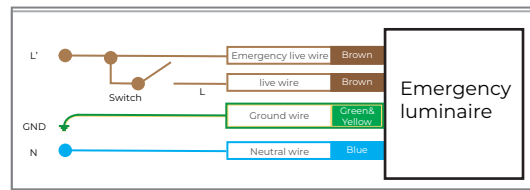
Emergency model

· Dimming method: Non / 1-10V / DALI+push optional



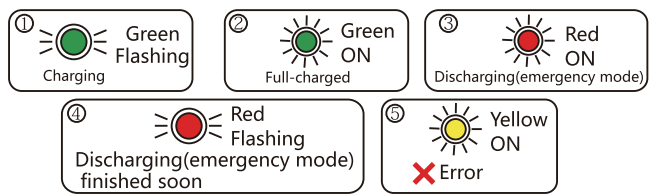
Technical parameters:

- Input voltage \approx 220-240VAC/50-60Hz
- Input current/power 50mA/4W
- Charging time \approx 24 hours
- Power(emergency mode) 4W constant power output
- Battery capacity 7.4V 2500mAh
- Emergency time \geq 3 hours
- Emergency light efficiency \geq 65LM/W



Indicator light introduction

- ① Green/flashing: Charging
- ② Green/on: Full-charged
- ③ Red/on: Discharging(emergency mode)
- ④ Red/flashing: Discharging(emergency mode) finished soon
- ⑤ Yellow/on: Error



Test switch introduction

Press the test switch to confirm whether the emergency function is normal

