

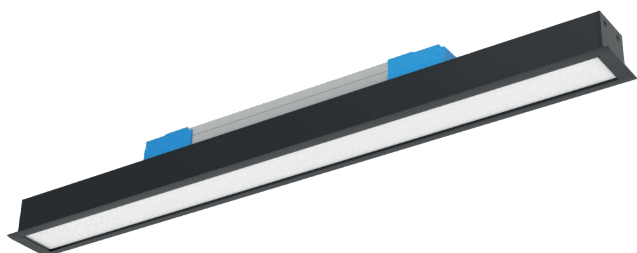
# PROFIL LIGHT

LX-PL-LE40FD

<b>IP</b> 20	<b>CRI</b> 80/90	<b>SDCM</b> <3 Step	<b>AC220V</b> ~240V
-----------------	---------------------	------------------------	------------------------

		<b>CASAMBI</b>
---	--	----------------

	<b>CE</b>	<b>RoHS</b>	<b>50000h</b>
---	-----------	-------------	---------------



- Material : AL6063-T5,spraying surface/anodizing
- Coating : Silver anodized(RAL9006),Black(RAL9005), White(RAL9003)
- Lighting direction: downward
- Light efficiency: 110 LM/W
- Length: 1200mm/1500mm/1800mm/2300mm optional (other length on request)
- CCT: 2700/3000/3500/4000/5000/6500K optional
- Input voltage: AC220-240V
- Application: Indoor
- Installation method: Recessed



**luxio**  
L I G H T I N G

[www.luxio-lighting.com](http://www.luxio-lighting.com)

## Luminaire Parameters

Version	Model	Length	Input Voltage (V)	Max. Current (A)	Type Power (W)	Max. Power (W)	CRI	CCT	Lumen (LM)
Normal	LX-PL-LE40FD-1200	1200mm	220VAC~ 240VAC	1	38	40	>80	2700K	3900lm
								3000K	3990lm
								3500K	4030lm
								4000K	4200lm
								5000K	4200lm
								6500K	4200lm
							>90	2700K	3300lm
								3000K	3390m
								3500K	3430lm
								4000K	3570lm
								5000K	3570lm
								6500K	3570lm
Normal	LX-PL-LE40FD-1500	1500mm	220VAC~ 240VAC	1.2	48	50	>80	2700K	4860lm
								3000K	4960lm
								3500K	5070lm
								4000K	5280lm
								5000K	5280lm
								6500K	5280lm
							>90	2700K	4180lm
								3000K	4270lm
								3500K	4310lm
								4000K	4490lm
								5000K	4490lm
								6500K	4490lm

Normal	LX-PL-LE40FD-1800	1800mm	220VAC~ 240VAC	1.5	56	60	>80	2700K	5730lm
								3000K	5850lm
								3500K	5920lm
								4000K	6160lm
								5000K	6160lm
								6500K	6160lm
							>90	2700K	4880lm
								3000K	4980lm
								3500K	5030lm
								4000K	5240lm
								5000K	5240lm
								6500K	5240lm
Normal	LX-PL-LE40FD-2300	2300mm	220VAC~ 240VAC	2	76	80	>80	2700K	7690lm
								3000K	7860lm
								3500K	8030lm
								4000K	8360lm
								5000K	8360lm
								6500K	8360lm
							>90	2700K	6530lm
								3000K	6670lm
								3500K	6820lm
								4000K	7100lm
								5000K	7100lm
								6500K	7100lm

Note:

1. The above parameters were tested based on 1.2M(3.94') standard products;
2. luminous flux is allowed to have a  $\pm 10\%$  error range;
3. The above parameters are typical values.

## Dimensions

