

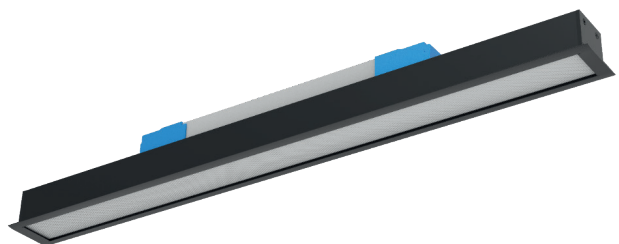
# PROFIL LIGHT

## LX-PL-LE40FP

<b>IP</b> 20	<b>CRI</b> 80/90	<b>SDCM</b> <3 Step	<b>AC220V</b> ~240V
-----------------	---------------------	------------------------	------------------------

		<b>CASAMBI</b>
---	--	----------------

	<b>CE</b>	<b>RoHS</b>	<b>50000h</b>
---	-----------	-------------	---------------



- Material : AL6063-T5,spraying surface/anodizing
- Coating : Silver anodized(RAL9006),Black(RAL9005), White(RAL9003)
- Lighting direction: downward
- Light efficiency: 105 LM/W
- Length: 1200mm/1500mm/1800mm/2300mm optional (other length on request)
- SDCM≤3 (ANSI)
- CCT: 2700/3000/3500/4000/5000/6500K optional
- Input voltage: AC220-240V
- Application: Indoor
- Installation method: Recessed



## Luminaire Parameters

Version	Model	Length	Input Voltage (V)	Max. Current (A)	Type Power (W)	Max. Power (W)	CRI	CCT	Lumen (LM)
Normal	LX-PL-LE40FP-1200	1200mm	220VAC~ 240VAC	1	38	40	>80	2700K	3710lm
								3000K	3790lm
								3500K	3830lm
								4000K	3990lm
								5000K	3990lm
								6500K	3990lm
							>90	2700K	3150lm
								3000K	3220m
								3500K	3260lm
								4000K	3390lm
								5000K	3390lm
								6500K	3390lm
Normal	LX-PL-LE40FP-1500	1500mm	220VAC~ 240VAC	1.2	48	50	>80	2700K	4690lm
								3000K	4790lm
								3500K	4840lm
								4000K	5040lm
								5000K	5040lm
								6500K	5040lm
							>90	2700K	3980lm
								3000K	4070lm
								3500K	4110lm
								4000K	4280lm
								5000K	4280lm
								6500K	4280lm

Normal	LX-PL-LE40FP-1800	1800mm	220VAC~ 240VAC	1.5	56	60	>80	2700K	5470lm
								3000K	5590lm
								3500K	5650lm
								4000K	5880lm
								5000K	5880lm
								6500K	5880lm
							>90	2700K	4600lm
								3000K	4700lm
								3500K	4800lm
								4000K	5000lm
								5000K	5000lm
								6500K	5000lm
Normal	LX-PL-LE40FP-2300	2300mm	220VAC~ 240VAC	2	76	80	>80	2700K	7340lm
								3000K	7500lm
								3500K	7660lm
								4000K	7980lm
								5000K	7980lm
								6500K	7980lm
							>90	2700K	6240lm
								3000K	6370lm
								3500K	6500lm
								4000K	6780lm
								5000K	6780lm
								6500K	6780lm

Note:

1. The above parameters were tested based on 1.2M(3.94') standard products;
2. luminous flux is allowed to have a  $\pm 10\%$  error range;
3. The above parameters are typical values.

## Dimensions

