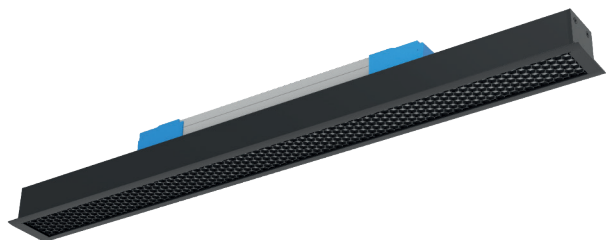


PROFIL LIGHT

LX-PL-LH40HP

IP 20	CRI 80/90	UGR <19	SDCM <3 Step	AC220V ~240V		
-----------------	---------------------	-------------------	------------------------	-------------------------	---	---

	CE	RoHS	50000h
---	-----------	-------------	---------------



- Material: AL6063-T5, spraying surface
- Coating: Black (RAL9005), White (RAL9003), Champagne Gold, Rose Gold, Matt Green (RAL6019), Matt Orange(RAL2008), Matt Yellow(RAL1004), Matt Blue(RAL5012)
- Length: 1200mm/1500mm /1800mm/2400mm optional
- CCT: 2700/3000/3500/4000/5000/6500/3000-6500K optional
- Beam angle: 60°x75°
- Light efficiency: 75 lm/W
- Lighting direction: downward
- Certification: CE, UKCA, ROHS, Reach



Luminaire Parameters

Version	Model	Length	Input Voltage (V)	Max. Current (A)	Type Power (W)	Max. Power (W)	Beam Angle (°)	CRI	CCT	Lumen (LM)
Normal / Emergency	LX-PL-LE40HP -1200	1200mm	200-240 VAC	0.18	34.0	37.4	60°x75°	>80	2700K	2370lm
									3000K	2425lm
									3500K	2475lm
									4000K	2550lm
									5000K	2550lm
									6500K	2550lm
								>90	2700K	2040lm
									3000K	2085lm
									3500K	2125lm
									4000K	2195lm
									5000K	2195lm
									6500K	2195lm
Normal	LX-PL-LE40HP 1500	1500mm	200-240 VAC	0.24	46.0	50.6	60°x75°	>80	2700K	3210lm
									3000K	3280lm
									3500K	3345lm
									4000K	3450lm
									5000K	3450lm
									6500K	3450lm
								>90	2700K	2760lm
									3000K	2820lm
									3500K	2880lm
									4000K	2965lm
									5000K	2965lm
									6500K	2965lm

Normal	LX-PL-LE40HP 1800	1800mm	200-240 VAC	0.26	51.0	56.1	60°x75°	>80	2700K	3555lm
									3000K	3635lm
									3500K	3710lm
									4000K	3825lm
									5000K	3825lm
									6500K	3825lm
	>90	2700K	3060lm							
		3000K	3125lm							
		3500K	3190lm							
		4000K	3290lm							
		5000K	3290lm							
		6500K	3290lm							
	LX-PL-LE40HP 2400	2400mm	0.40	84.0	92.4	>80		2700K	4745lm	
								3000K	4845lm	
								3500K	4945lm	
								4000K	5100lm	
								5000K	5100lm	
								6500K	5100lm	
>90	2700K	4080lm								
	3000K	4165lm								
	3500K	4255lm								
	4000K	4385lm								
	5000K	4385lm								
	6500K	4385lm								

Dial switch CCT tunable	LX-PL-LE40HP	1200mm	200-240 VAC	0.18	34.0	37.4	65°	>80	3000K	2480lm
									4300K	2585lm
									6500K	2515lm
		1500mm		>90	3000K	2135lm				
					4300K	2220lm				
					6500K	2165lm				
		1800mm		>80	3000K	3360lm				
					4300K	3495lm				
					6500K	3405lm				
		2400mm		>90	3000K	2890lm				
					4300K	3005lm				
					6500K	2925lm				
	>80	3000K	3725lm							
		4300K	3875lm							
		6500K	3775lm							
	>90	3000K	3200lm							
		4300K	3335lm							
		6500K	3245lm							
	>80	3000K	4965lm							
		4300K	5170lm							
		6500K	5030lm							
	>90	3000K	4270lm							
		4300K	4445lm							
		6500K	4330lm							

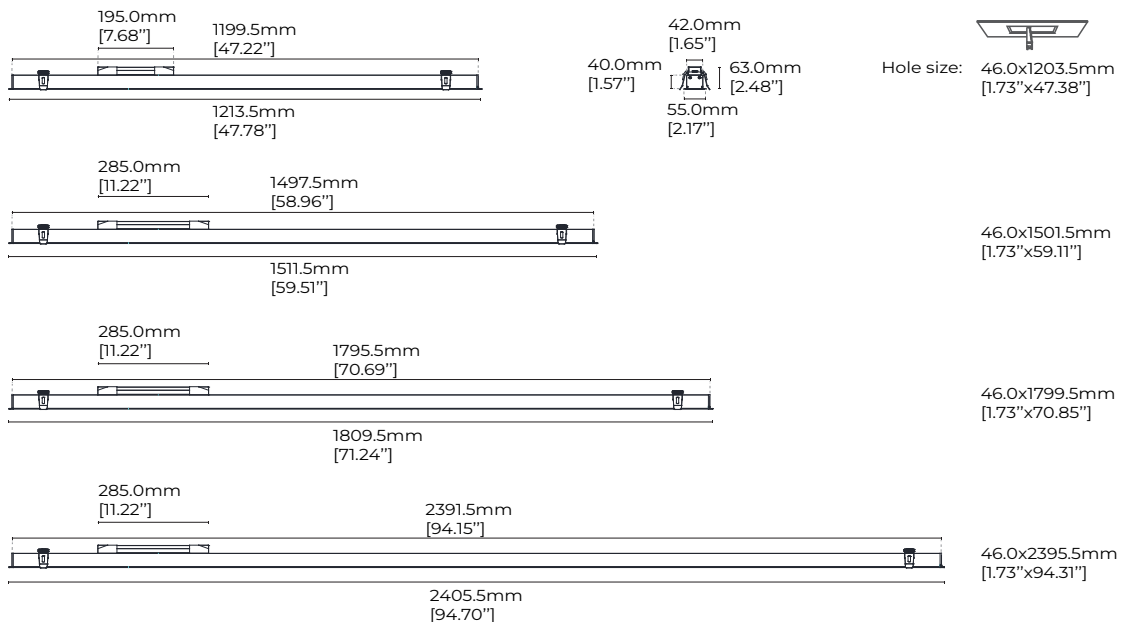
Note:

1. The output data is based on the testing result of Ra80,4000k,white luminaires;
2. The tolerance of output data can be vary up to 10%;
3. The output data is typical value;
- 4.The luminous flux of black luminaire is 55% of white luminaire.

Accessories Information

Picture	Section size	Name	Description	Model	Note
	/	Splicing bar (external)	Size:L80.0*W10.0*H2.0mm [Inch size:L3.15"*W0.39"*H0.08"]	LX-EX-E1	Splicing accessory
		L-shaped corner (60°)	Material:AL6063-T5 Size:L200*W173.2*H40.0mm [Inch size:L7.87"*W6.82"*H1.57"]	LX-L60-LE40	Recessed standard corner
		L-shaped corner (90°)	Material:AL6063-T5 Size:L200*W200*H40.0mm [Inch size:L7.87"*W7.87"*H1.57"]	LX-L90-LE40	
		L-shaped corner (120°)	Material:AL6063-T5 Size:L200*W200.7*H40.0mm [Inch size:L7.87"*W7.90"*H1.57"]	LX-L120-LE40	
		Y-shaped corner	Material:AL6063-T5 Size:L373.9*W323.8*H40.0mm [Inch size:L14.72"*W12.75"*H1.57"]	LX-Y120-LE40	
		X-shaped corner	Material:AL6063-T5 Size:L400*W400*H40.0mm [Inch size:L15.75"*W15.75"*H1.57"]	LX-X90-LE40	

Dimensions

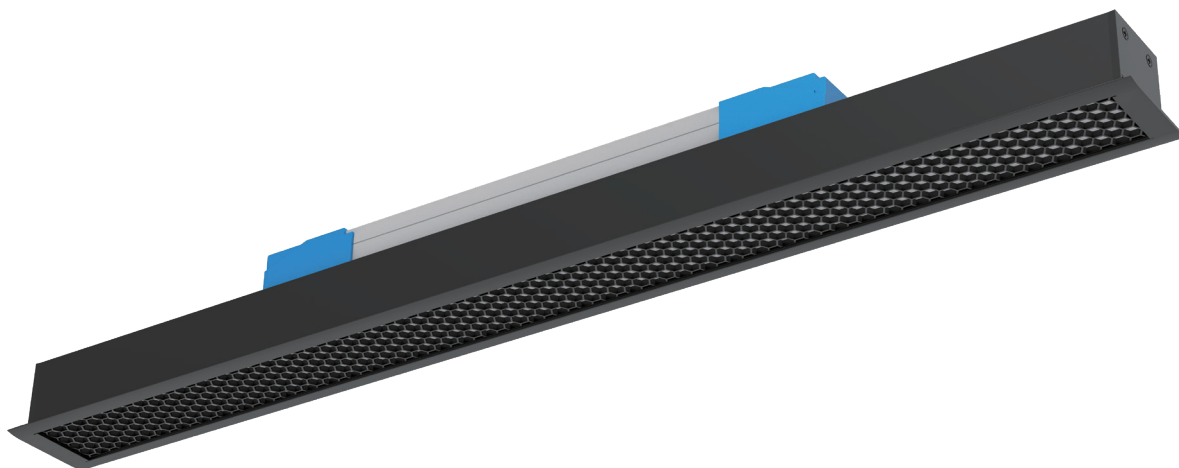


Note:Luminaires length shown above indicates the length of profile + thickness of 2 end caps, where each end cap is 10.5mm thick, 2 end caps is 21mm thick in total.

Version Type

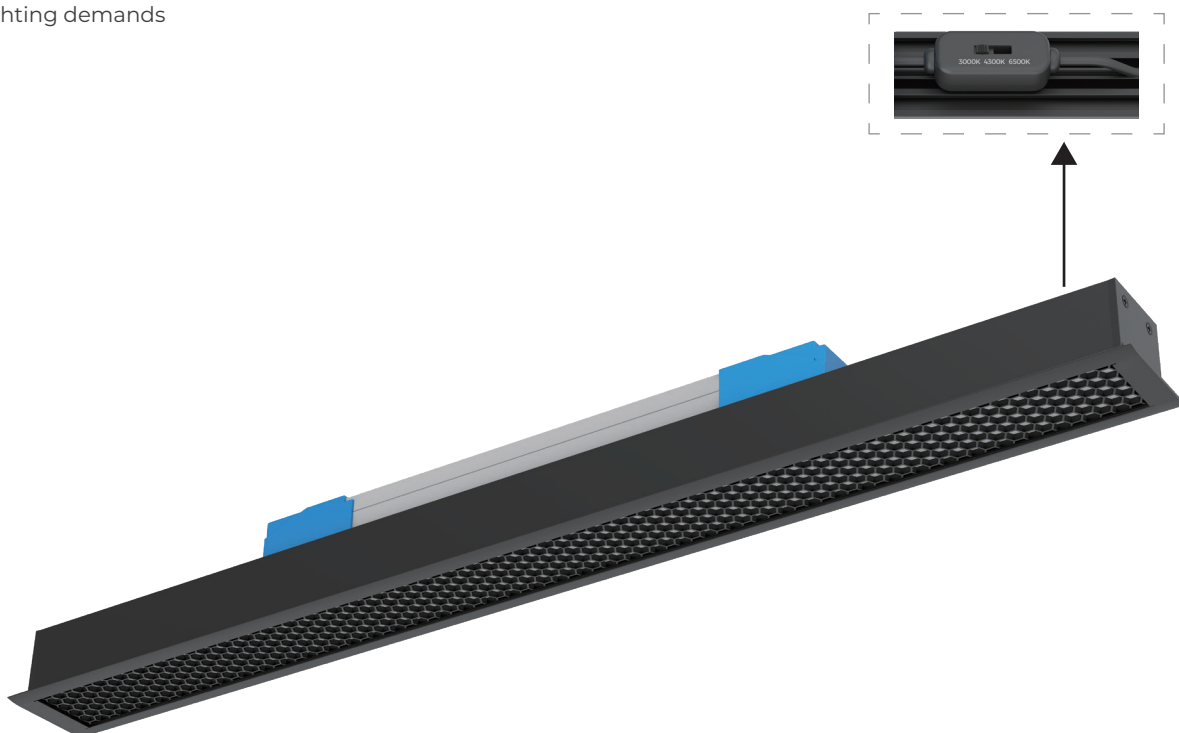
【Normal】

- 75lm/W
- Dimming method: Non / 1-10V / DALI+push



【Dial switch CCT control】

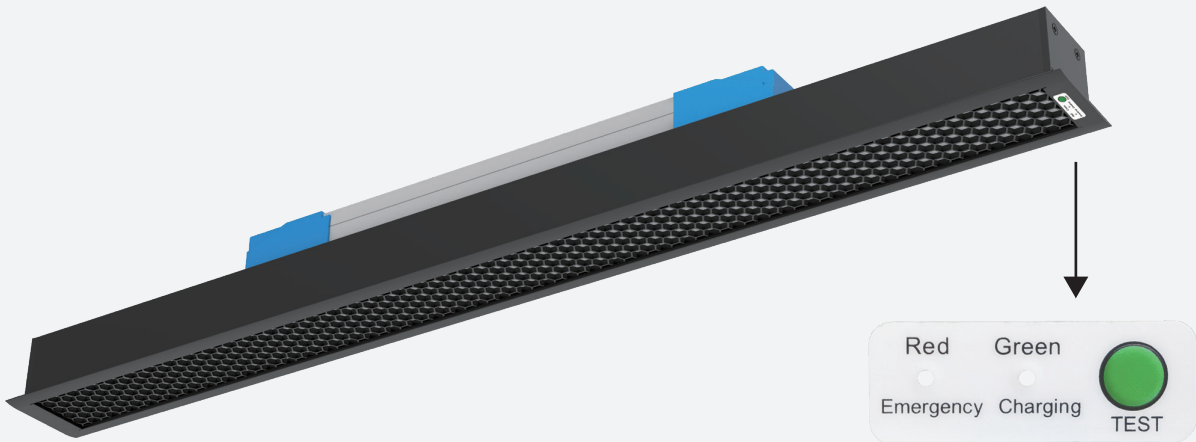
- Dimming method: Non/ 1-10V/ DALI+push optional
- 3000K/4300K/6500K 3-tier CCT adjustable, can achieve general lighting demands



Emergency model

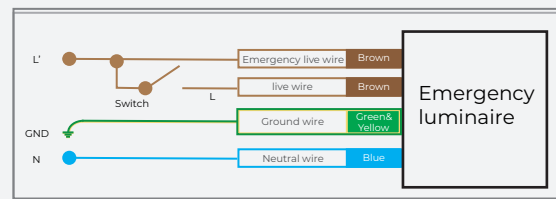
【Emergency model】

· Dimming method: Non / 1-10V / DALI+push optional



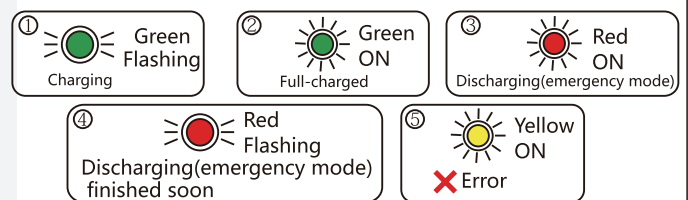
Technical parameters:

- Input voltage: 220-240VAC/50-60Hz
- Input current/power: 50mA/4W
- Charging time: 24 hours
- Power (emergency mode): 4W constant power output
- Battery capacity: 7.4V 2500mAh
- Emergency time: ≥3 hours
- Emergency light efficiency: ≥75LM/W



Indicator light introduction

- ① Green/flashing: Charging
- ② Green/on: Full-charged
- ③ Red/on: Discharging (emergency mode)
- ④ Red/flashing: Discharging (emergency mode) finished soon
- ⑤ Yellow/on: Error



Test switch introduction

Press the test switch to confirm whether the emergency function is normal

