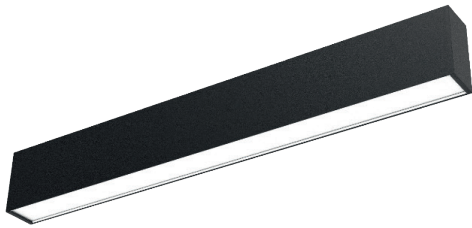
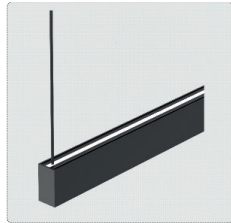


PROFIL LIGHT



LX-PL-LH40FD

IP 20	CRI 80/90	SDCM <3 Step	AC220V ~240V	 2
-----------------	---------------------	------------------------	------------------------	--

 5 GARANTIE	CE	RoHS	50000h
--	-----------	-------------	---------------

- Material : AL6063-T5,spraying surface/anodizing
- Coating : Black (RAL9005), White (RAL9003), Champagne Gold, Rose Gold, Matt Green(RAL6019), Matt Orange(RAL2008)
- Length: 1200mm/1500mm/1800mm/2300mm optional
- Lighting direction : upward&downward
- Grille angle : 110°
- Light efficiency: 100(CCT tunable) / 110(Normal&Emergency&Presence sensing) / 120(High efficiency) lm/W
- SDCM: <3 Step (ANSI)
- Installation method: Pendant



luxio
L I G H T I N G

www.luxio-lighting.com

Luminaire Parameters

Version	Model	Length	Input Voltage (V)	Max. Current (A/m)	Type Power (W/m)	Max. Power (W/m)	CRI	CCT	Lumen (LM/m)
Normal/ Emergency Presence sensing	LX-PL-LH40FD-1200	1200mm (3.94ft)	220VAC~ 240VAC	0.22 [0.06A/ft]	46.0 [11.68W/ft]	50.6 [12.84W/ft]	>80	2700K	4705lm
								3000K	4805lm
								3500K	4910lm
								4000K	5060lm
								5000K	5060lm
								6500K	5060lm
							>90	2700K	4045lm
								3000K	4135lm
								3500K	4220lm
								4000K	4350lm
								5000K	4350lm
								6500K	4350lm
Normal/ Presence sensing	LX-PL-LH40FD-1500	1500mm (4.92ft)	220VAC~ 240VAC	0.29 [0.06A/ft]	59.0 [11.99W/ft]	64.9 [13.19W/ft]	>80	2700K	6035lm
								3000K	6165lm
								3500K	6295lm
								4000K	6490lm
								5000K	6490lm
								6500K	6490lm
							>90	2700K	5190lm
								3000K	5300lm
								3500K	5415lm
								4000K	5580lm
								5000K	5580lm
								6500K	5580lm

Normal/ Presence sensing	LX-PL-LH40FD-1800	1800mm (5.9ft)	220VAC~ 240VAC	0.33 (0.06A/ft)	69.0 [11.68W/ft]	75.9 (12.84W/ft)	>80	2700K	7060lm
								3000K	7210lm
								3500K	7360lm
								4000K	7590lm
								5000K	7590lm
								6500K	7590lm
							>90	2700K	6070lm
								3000K	6200lm
								3500K	6330lm
								4000K	6525lm
								5000K	6525lm
								6500K	6525lm
Normal/ Presence sensing	LX-PL-LH40FD-2400	2400mm (7.87ft)	220VAC~ 240VAC	0.44 (0.06A/ft)	91.0 (11.56W/ft)	100.1 [12.72W/ft]	>80	2700K	9310lm
								3000K	9510lm
								3500K	9710lm
								4000K	10010lm
								5000K	10010lm
								6500K	10010lm
							>90	2700K	8005lm
								3000K	8180lm
								3500K	8350lm
								4000K	8610lm
								5000K	8610lm
								6500K	8610lm

High efficiency	LX-PL-LH40FD	1200 mm [3.94ft]	200-240 VAC	0.22 [0.06A/ft]	46.0 [11.68W/ft]	50.6 [12.84W/ft]	110°	>80	2700K	5135lm
									3000K	5245lm
									4000K	5520lm
									6500K	5520lm
		1500 mm [4.92ft]		>90	2700K	4415lm				
					3000K	4510lm				
					4000K	4745lm				
					6500K	4745lm				
		1800 mm [5.91ft]		>80	2700K	6585lm				
					3000K	6725lm				
					4000K	7080lm				
					6500K	7080lm				
		2400 mm [7.87ft]		>90	2700K	5665lm				
					3000K	5785lm				
					4000K	6090lm				
					6500K	6090lm				
				>80	2700K	7700lm				
					3000K	7865lm				
					4000K	8280lm				
					6500K	8280lm				
	>90	2700K	6620lm							
		3000K	6765lm							
		4000K	7120lm							
		6500K	7120lm							
	>80	2700K	10155lm							
		3000K	10375lm							
		4000K	10920lm							
		6500K	10920lm							
	>90	2700K	8735lm							
		3000K	8920lm							
		4000K	9390lm							
		6500K	9390lm							

Dial switch CCT tunable	LX-PL-LH40FD	1200 mm [3.94ft]	200-240 VAC	0.22 [0.06A/ft]	46.0 [11.68W/ft]	50.6 [12.84W/ft]	>80	3000K	3195lm
								4300K	3400lm
								6500K	3265lm
							>90	3000K	2750lm
								4300K	2925lm
								6500K	2805lm
		1500 mm [4.92ft]		>80	3000K	4325lm			
					4300K	4600lm			
					6500K	4415lm			
				>90	3000K	3720lm			
					4300K	3955lm			
					6500K	3800lm			
1800 mm [5.91ft]	>80	3000K	4795lm						
		4300K	5100lm						
		6500K	4895lm						
	>90	3000K	4125lm						
		4300K	4385lm						
		6500K	4210lm						
2400 mm [7.87ft]	>80	3000K	6390lm						
		4300K	6800lm						
		6500K	6530lm						
	>90	3000K	5495lm						
		4300K	5850lm						
		6500K	5615lm						

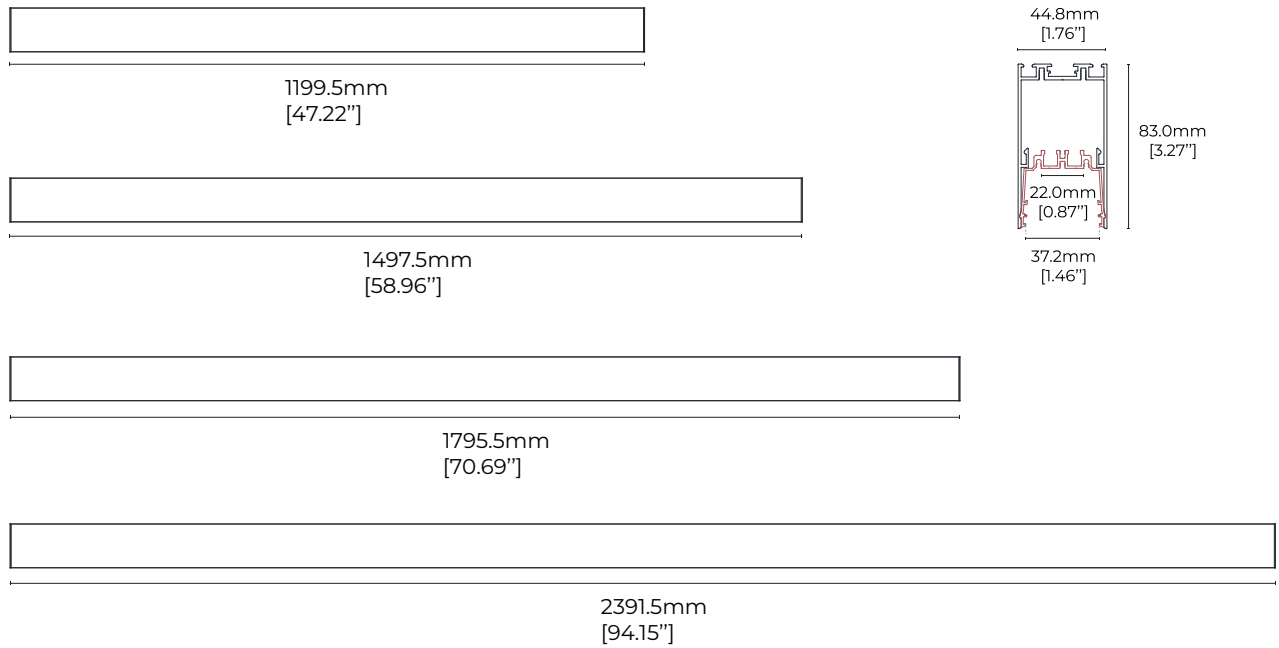
Note:

1. The output data is based on the testing result of Ra80,4000k,white luminaires;
2. The tolerance of output data can be vary up to 10%;
3. The output data is typical value;
- 4.The luminous flux of black luminaire is 55% of white luminaire.

Accessories Information

Picture	Section size	Name	Description	Model	Note
		Splicing bar (external)	Size:L110*W15.5*H11.7mm [Inch size:L4.33"*W0.61"*H0.46"]	LX-EX-41	Splicing accessories
		Splicing bar (internal)	Material:SPCC Size:L135*W41.4*H42.2mm [Inch size:L5.31"*W1.63"*H1.66"]	LX-EX-46(N)	
	/	Pendant cable (with junction box)	Junction box L80*W80*H30mm [Inch Size:L3.15"*W3.15"*H1.18"] Steel cable D1.5*2000/4000mm [Inch Size: D0.06"*78.74"/157.48"]	LX-PY-D	Pendant installation accessories
	/	Pendant cable	Steel cable D1.5*2000/4000mm [Inch Size: D0.06"*78.74"/157.48"]	LX-PN-D	
		Track pendant rod	Material:Fe Size: ϕ 13.5*(500/1000)mm [Inch size: ϕ 0.53"*(19.69"/39.37")] Other:0.5-1.0/1.0-2.0M adjustable [19.69"-39.37"/39.37"-78.74"]	LX-PG-I	
		Pendant installation clip	Material:Stainless steel Size:L31.6*W20mm*H5.8mm [Inch size:L1.24"*H0.79"*H0.23"]	LX-CP-44	
		L-shaped corner (60°)	Material:AL6063-T5 Size:L200*W173.2*H83.0mm [Inch size:L7.87"*W6.82"*H3.27"]	LX-L60-LS40	Pendant standard corner
		L-shaped corner (90°)	Material:AL6063-T5 Size:L200*W200*H83.0mm [Inch size:L7.87"*W7.87"*H3.27"]	LX-L90-LS40	
		L-shaped corner (120°)	Material:AL6063-T5 Size:L200*W195.6*H83.0mm [Inch size:L7.87"*W7.70"*H3.27"]	LX-L120-LS40	
		Y-shaped corner	Material:AL6063-T5 Size:L368.8*W319.4*H83.0mm [Inch size:L14.52"*W12.57"*H3.27"]	LX-Y120-LS40	
		X-shaped corner	Material:AL6063-T5 Size:L400*W400*H83.0mm [Inch size:L15.75"*W15.75"*H3.27"]	LX-X90-LS40	

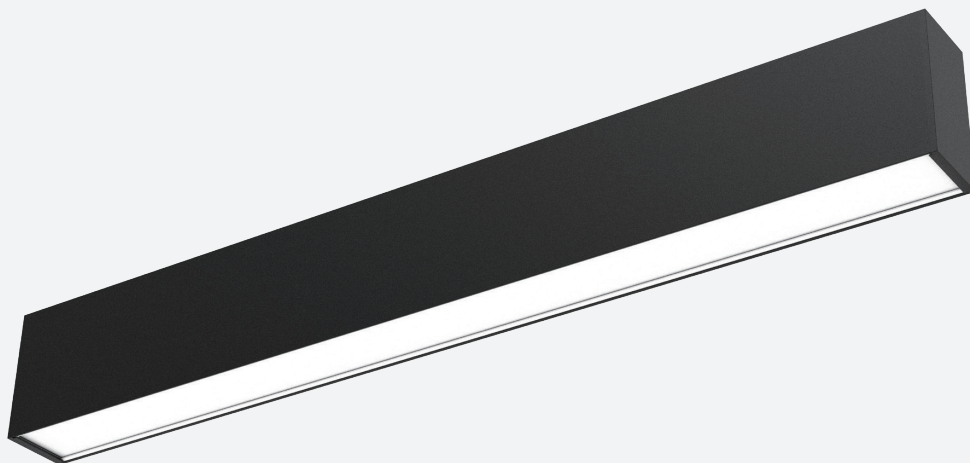
Dimensions



Version Type

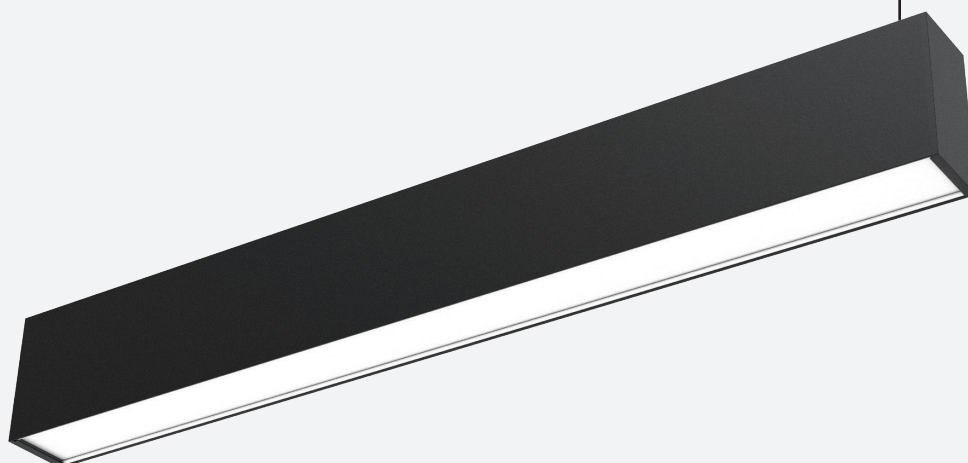
【Normal&High efficiency】

- 110lm/W (Normal),120lm/W (High efficiency)
- Dimming method: Non / 1-10V / DALI+push



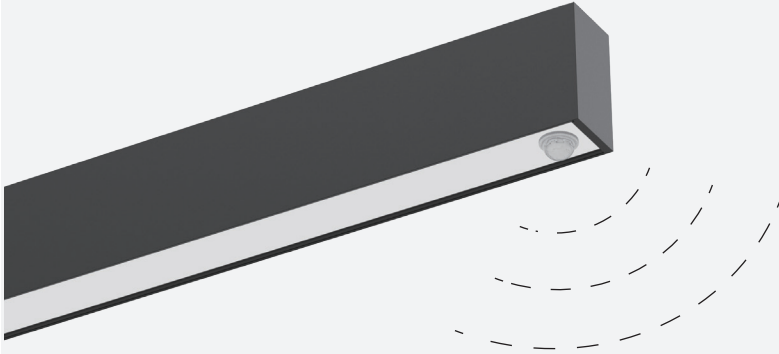
【Dial switch CCT control】

- Dimming method: Non/ 1-10V/ DALI+push optional
- 3000K/4300K/6500K 3-tier CCT adjustable, can achieve general lighting demands



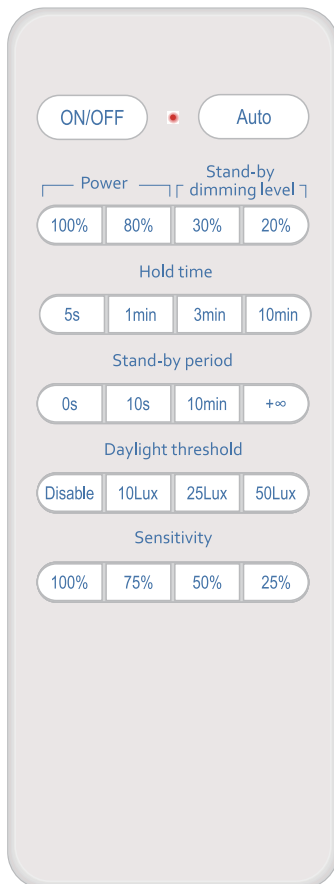
Presence sensing

Dimming method: Non/ 1-10V/ DALI+push optional



Technical parameters:

- Sensitivity 100%/75%/50%/25%
- Hold time 5s/1min/3min/10min
- Daylight threshold Disable/50Lux/25Lux/10Lux
- Stand-by period 0s/10s/10min/+∞
- Stand-by dimming level 20%/30%
- Mounting height Max. 6m
- Detection range 3-4m
- Detection Angle 100°
- Operating temperature -25°C~ +50°C
- Other Default setting: Sensitivity 100%, Hold time 5s, Daylight threshold Disable, Stand-by period 0s.



Key	Function	
ON/OFF	Setting the light permanent ON or OFF without motion mode.	
Auto	Turn on the Sensor mode	
Power	100% 80%	Light power output when motion detected.
Stand-by dimming level	30% 20%	The dimming level in the standby period.
Hold time		The period of light keeping 100% brightness after moving objects leave the detection area.
Stand-by period		The period of light keeping low output before it's completely switched off. When it's preset as "+∞", the light always keep at low output if no movement in the detection area and doesn't turn off.
Daylight threshold		Definition of the ambient brightness; only when the ambient brightness is lower than the preset specific lux amount, the sensor will work; when it's preset as "disable", the sensor will detect motion regardless the ambient brightness.
Sensitivity		In this area, movement will be detected and able to trigger the sensor. 100% detection area is also known as the strong sensitivity.

Note: Remote Setting Tips: When press any butbn, if the light is flickering one time, means the setting is successful.

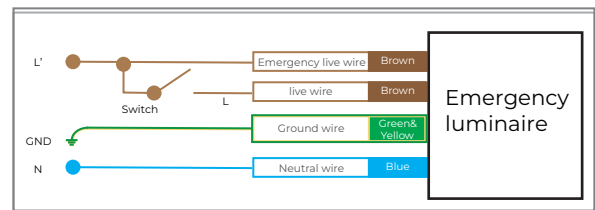
Emergency model

· Dimming method: Non / 1-10V / DALI+push optional



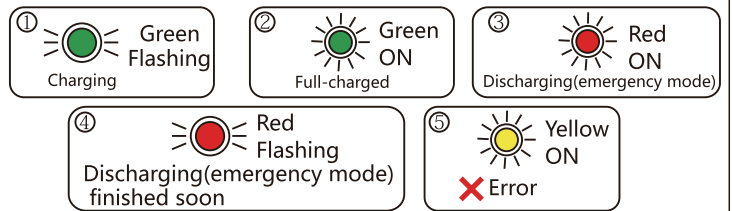
· Technical parameters:

- Input voltage $\leq 220-240\text{VAC}/50-60\text{Hz}$
- Input current/power $50\text{mA}/4\text{W}$
- Charging time ≤ 24 hours
- Power(emergency mode) 4W constant power output
- Battery capacity $7.4\text{V } 2500\text{mAh}$
- Emergency time ≥ 3 hours
- Emergency light efficiency $\geq 110\text{LM/W}$



Indicator light introduction

- ① Green/flashing: Charging
- ② Green/on: Full-charged
- ③ Red/on: Discharging(emergency mode)
- ④ Red/flashing: Discharging(emergency mode) finished soon
- ⑤ Yellow/on: Error



Test switch introduction

Press the test switch to confirm whether the emergency function is normal

