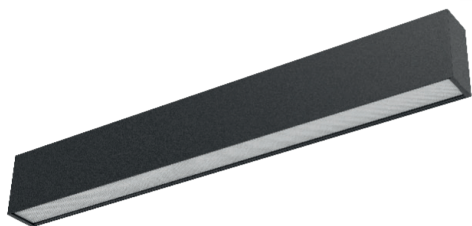
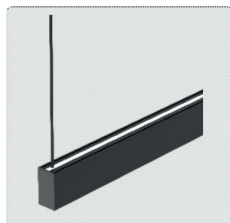


PROFIL LIGHT



LX-PL-LH40FP

IP 20	CRI 80/90	SDCM <3 Step	AC220V ~240V	
-----------------	---------------------	------------------------	------------------------	--

	CE	RoHS	50000h
--	-----------	-------------	---------------

- Material : AL6063-T5,spraying surface/anodizing
- Coating : Black (RAL9005), White (RAL9003), Champagne Gold, Rose Gold, Matt Green (RAL6019), Matt Orange(RAL2008)
- Beam angle: 65°x70°
- Length: 11200mm/1500mm /1800mm optional
- Lighting direction: upward&downward
- Light efficiency: 90(CCT tunable) / 100(Normal&Emergency) / 120(High efficiency) lm/W
- SDCM≤3 (ANSI)
- Installation method : Pendant



luxio
L I G H T I N G

www.luxio-lighting.com

Luminaire Parameters

Version	Model	Length	Input Voltage (V)	Max. Current (A)	Type Power (W)	Max. Power (W)	CRI	CCT	Lumen (LM)
Normal/ Emergency	LX-PL-LH40FP-1200	1200mm	220VAC~ 240VAC	0.19	39.0	42.9	>80	2700K	3625lm
								3000K	3705lm
								3500K	3785lm
								4000K	3900lm
								5000K	3900lm
								6500K	3900lm
							>90	2700K	3120lm
								3000K	3185lm
								3500K	3255lm
								4000K	3355lm
								5000K	3355lm
								6500K	3355lm
Normal	LX-PL-LH40FP-1500	1500mm	220VAC~ 240VAC	0.22	46	50.6	>80	2700K	4280lm
								3000K	4370lm
								3500K	4460lm
								4000K	4600lm
								5000K	4600lm
								6500K	4600lm
							>90	2700K	3680lm
								3000K	3760lm
								3500K	3835lm
								4000K	3955lm
								5000K	3955lm
								6500K	3955lm

Normal	LX-PL-LH40FP-1800	1800mm	220VAC~ 240VAC	0.29	60	66	>80	2700K	5580lm
								3000K	5700lm
								3500K	5820lm
								4000K	6000lm
								5000K	6000lm
								6500K	6000lm
							>90	2700K	4800lm
								3000K	4900lm
								3500K	5005lm
								4000K	5160lm
								5000K	5160lm
								6500K	5160lm
High efficiency	LX-PL-LH40FP-1200-H	1200mm	220VAC~ 240VAC	0.19	39.0	42.9	>80	2700K	4350lm
								3000K	4445lm
								3500K	4680lm
								4000K	4680lm
							>90	5000K	3745lm
								6500K	3825lm
	2700K	4025lm							
	3000K	4025lm							
	LX-PL-LH40FP-1500-H	1500mm [4.92ft]		0.22	46.0	50.6	>80	2700K	5135lm
								3000K	5245lm
								4000K	5520lm
								6500K	5520lm
>90			2700K				4415lm		
			3000K				4510lm		
4000K	4745lm								
6500K	4745lm								


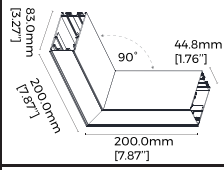

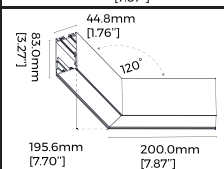

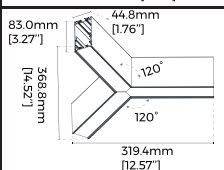

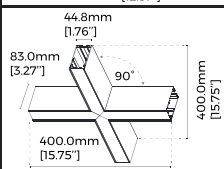
High efficiency	LX-PL-LH40FP-1800-H	1800mm	200-240 VAC	0.29	60.0	66.0	65°x70°	>80	2700K	6695lm		
									3000K	6840lm		
									4000K	7200lm		
									6500K	7200lm		
	>90	2700K		5760lm								
		3000K		5880lm								
		4000K		6190lm								
		6500K		6190lm								
Dial switch CCT tunable	LX-PL-LH40FP-1200-S	1200mm	200-240 VAC	0.19	39.0	42.9	65°x70°	>80	3000K	3430lm		
									4500K	3665lm		
									6500K	3510lm		
	>90	3000K		2950lm								
		4500K		3155lm								
		6500K		3020lm								
	LX-PL-LH40FP-1500-S	1500mm		200-240 VAC	0.22	46.0		50.6	65°x70°	>80	3000K	4050lm
											4500K	4325lm
											6500K	4140lm
	>90	3000K			3480lm							
		4500K			3720lm							
		6500K			3560lm							
LX-PL-LH40FP-1800-S	1800mm	200-240 VAC	0.29		60.0	66.0	65°x70°	>80		3000K	5280lm	
										4500K	5640lm	
										6500K	5400lm	
								>90		3000K	4540lm	
										4500K	4850lm	
										6500K	4645lm	

Note:

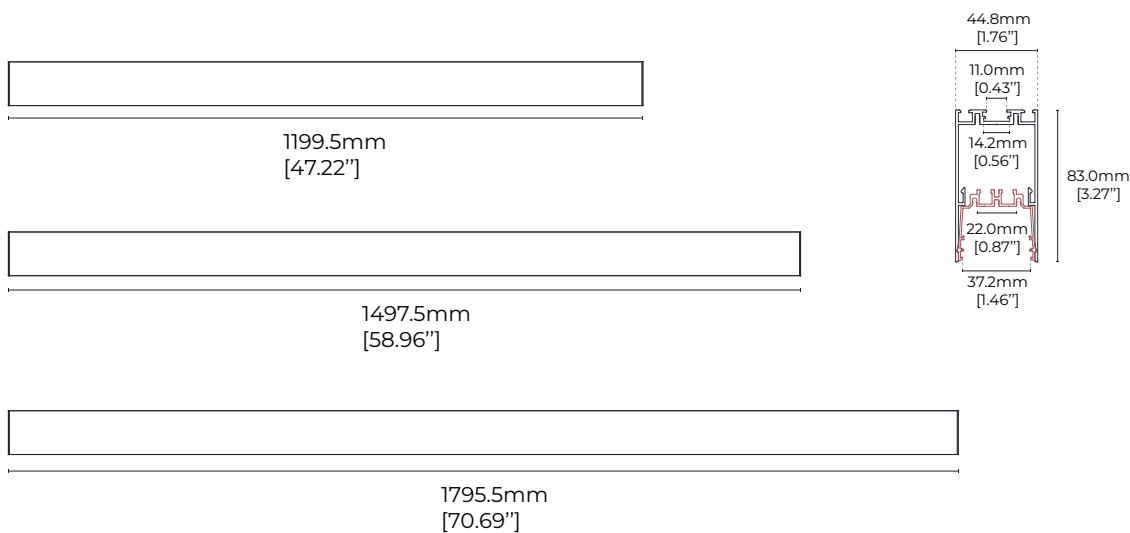
1. The output data is based on the testing result of Ra80,4000k,white luminaires;
2. The tolerance of output data can be vary up to 10%;
3. The output data is typical value;
- 4.The luminous flux of black luminaire is 84% of white luminaire.

Accessories Information

Picture	Section size	Name	Description	Model
		Splicing bar (external)	Size:L110*W15.5*H11.7mm [Inch size:L4.33"*W0.61"*H0.46"]	LX-EX-41
		Splicing bar (internal)	Material:SPCC Size:L135*W41.4*H42.2mm [Inch size:L5.31"*W1.63"*H1.66"]	LX-EX-46(N)
	/	Pendant cable (with junction box)	Junction box L80*W80*H30mm [Inch Size:L3.15"*W3.15"*H1.18"] Steel cable D1.5*2000/4000mm [Inch Size: D0.06"*78.74"/157.48"]	LX-PY-D
	/	Pendant cable	Steel cable D1.5*2000/4000mm [Inch Size: D0.06"*78.74"/157.48"]	LX-PN-D
		Track pendant rod	Material:Fe Size:φ13.5*(500/1000)mm [Inch size:φ0.53"*(19.69"/39.37")] Other:0.5-1.0/1.0-2.0M adjustable [19.69"-39.37"/39.37"-78.74"]	LX-PG-I
		Pendant installation clip	Material:PC Size:L31.6*W20mm*H5.8mm [Inch size:L1.24"*H0.79"*H0.23"]	LX-CP-44
	/	Surface mounted buckle	Size:L72*W54*H5.9mm (Inch Size:L2.83"*W2.13"*H0.23")	LX-CL-08
		L-shaped corner (60°)	Material:AL6063-T5 Size:L200*W173.2*H83.0mm [Inch size:L7.87"*W6.82"*H3.27"]	LX-L60-LS40

Picture	Section size	Name	Description	Model
		L-shaped corner (90°)	Material:AL6063-T5 Size:L200*W200*H83.0mm [Inch size:L7.87**W7.87**H3.27"]	LX-L90-LS40
		L-shaped corner (120°)	Material:AL6063-T5 Size:L200*W195.6*H83.0mm [Inch size:L7.87**W7.70**H3.27"]	LX-L120-LS40
		Y-shaped corner	Material:AL6063-T5 Size:L368.8*W319.4*H83.0mm [Inch size:L14.52**W12.57**H3.27"]	LX-Y120-LS40
		X-shaped corner	Material:AL6063-T5 Size:L400*W400*H83.0mm [Inch size:L15.75**W15.75**H3.27"]	LX-X90-LS40

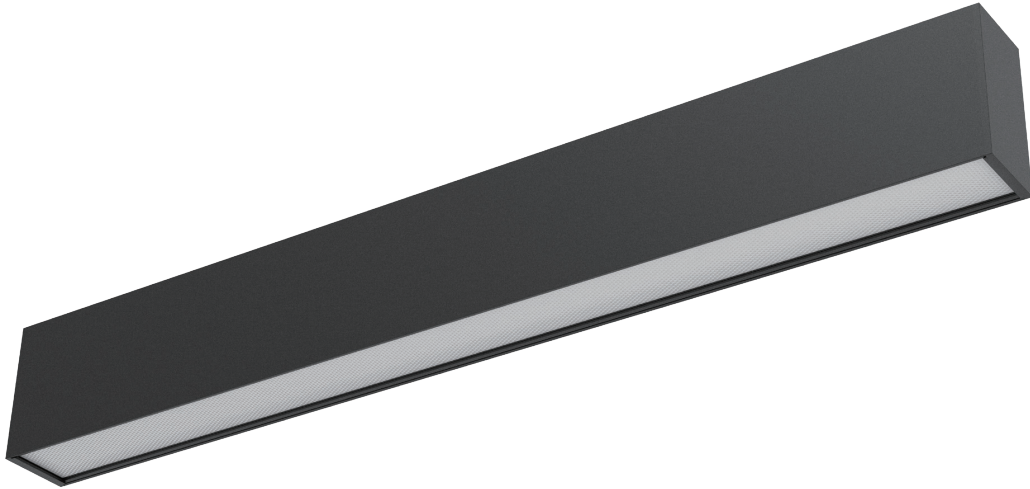
Dimensions



Version Type

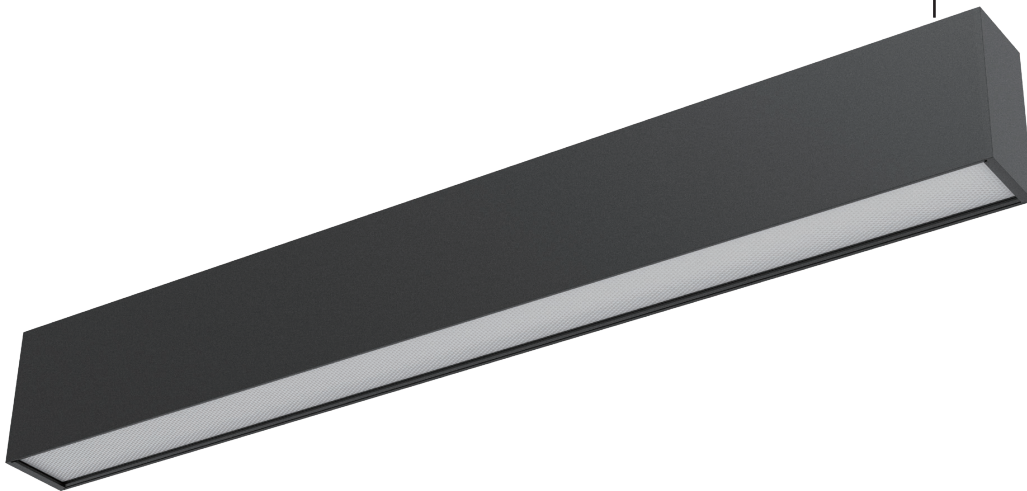
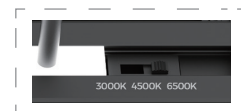
【Normal&High efficiency】

- 100lm/W (Normal),120lm/W (High efficiency version)
- Dimming method: Non / 1-10V / DALI+push



【Dial switch CCT control】

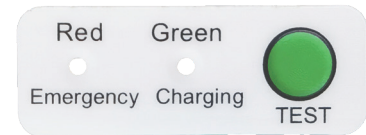
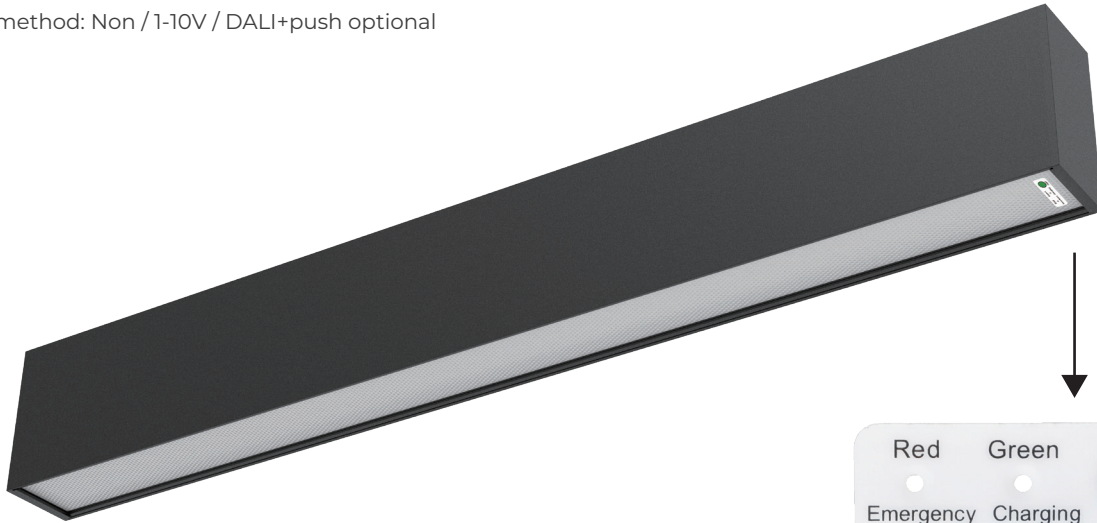
- Dimming method: Non/ 1-10V/ DALI+push optional
- 3000K/4500K/6500K 3-tier CCT adjustable, can achieve general lighting demands



Emergency model

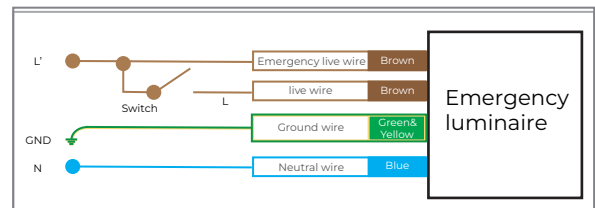
【Emergency model】

· Dimming method: Non / 1-10V / DALI+push optional



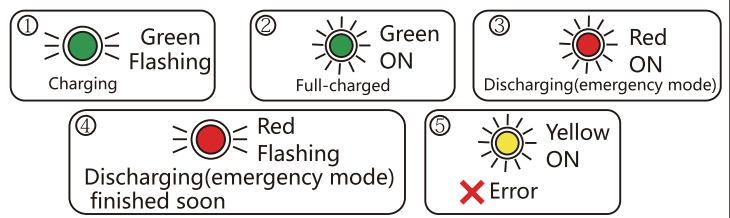
· Technical parameters:

- Input voltage ϕ 220-240VAC/50-60Hz
- Input current/power 50mA/4W
- Charging time ϕ 24 hours
- Power(emergency mode) 4W constant power output
- Battery capacity 7.4V 2500mAh
- Emergency time ϕ \geq 3 hours
- Emergency light efficiency \geq 100LM/W



Indicator light introduction

- ① Green/flashing: Charging
- ② Green/on: Full-charged
- ③ Red/on: Discharging(emergency mode)
- ④ Red/flashing: Discharging(emergency mode) finished soon
- ⑤ Yellow/on: Error



Test switch introduction

Press the test switch to confirm whether the emergency function is normal

