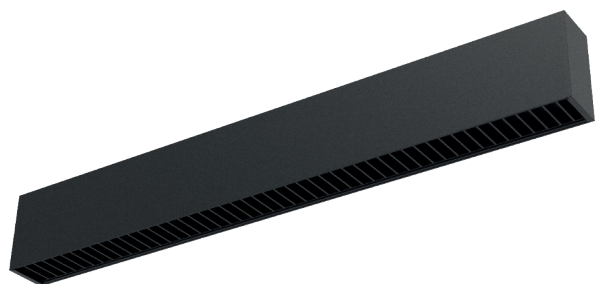


# PROFIL LIGHT



## LX-PL-LS40BD

<b>IP</b> 20	<b>CRI</b> 80/90	<b>UGR</b> <19	<b>SDCM</b> <3 Step	<b>AC220V ~240V</b>		
-----------------	---------------------	-------------------	------------------------	-------------------------	--	--

	<b>CE</b>	<b>RoHS</b>	<b>50000h</b>
--	-----------	-------------	---------------

- Material : AL6063-T5,spraying surface
- Coating : Coating: Black (RAL9005), White (RAL9003), Champagne Gold , Rose Gold, Matt Green(RAL6019), Matt Orange(RAL2008), Matt Yellow(RAL1004) , Matt Blue(RAL5012)
- Length: 1200mm/1500mm/1800mm/2400mm optional
- Lighting direction: downward
- Beam angle: 65°
- Light efficiency: 65 LM/W



## Luminaire Parameters

Version	Model	Length	Input Voltage (V)	Max. Current (A)	Type Power (W)	Max. Power (W)	CRI	CCT	Lumen (LM)
Normal/ Emergency	LX-PL-LS40BD-1200	1200mm (3.94ft)	220VAC~ 240VAC	0.15 [0.04A/ft]	28.0 [7.11W/ft]	30.8 [7.82W/ft]	>80	2700K	1695lm
								3000K	1730lm
								3500K	1765lm
								4000K	1820lm
								5000K	1820lm
								6500K	1820lm
							>90	2700K	1455lm
								3000K	1485lm
								3500K	1520lm
								4000K	1565lm
								5000K	1565lm
								6500K	1565lm
Normal	LX-PL-LS40BD-1500	1500mm (4.92ft)	220VAC~ 240VAC	0.18 [0.04A/ft]	34.0 [6.91W/ft]	37.4 [7.60W/ft]	>80	2700K	2055lm
								3000K	2100lm
								3500K	2145lm
								4000K	2210lm
								5000K	2210lm
								6500K	2210lm
							>90	2700K	1770lm
								3000K	1805lm
								3500K	1845lm
								4000K	1900lm
								5000K	1900lm
								6500K	1900lm

Normal	LX-PL-LS40BD-1800	1800mm (5.9ft)	220VAC~ 240VAC	0.21 (0.04A/ft)	40.0 [6.77W/ft]	44.0 (7.47W/ft)	>80	2700K	2420lm
								3000K	2470lm
								3500K	2520lm
								4000K	2600lm
								5000K	2600lm
								6500K	2600lm
							>90	2700K	2080lm
								3000K	2125lm
								3500K	2170lm
								4000K	2235lm
								5000K	2235lm
								6500K	2235lm
Normal	LX-PL-LS40BD-2400	2400mm (7.55ft)	220VAC~ 240VAC	0.29 (0.04A/ft)	56.0 (7.12W/ft)	61.6 [7.83W/ft]	>80	2700K	3385lm
								3000K	3460lm
								3500K	3530lm
								4000K	3640lm
								5000K	3640lm
								6500K	3640lm
							>90	2700K	2910lm
								3000K	2975lm
								3500K	3035lm
								4000K	3130lm
								5000K	3130lm
								6500K	3130lm


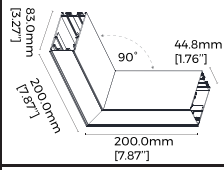

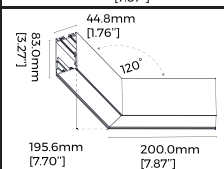

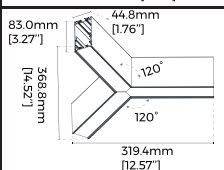

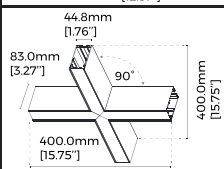
Dial switch CCT tunable	LX-PL-LS40BD	1200 mm [3.94ft]	200-240 VAC	0.15 [0.04A/ft]	28.0 [7.11W/ft]	30.8 [7.82W/ft]	65°	>80	3000K	1625lm
									4300K	1820lm
									6500K	1680lm
		1500 mm [4.92ft]		>90	3000K	1395lm				
					4300K	1565lm				
					6500K	1445lm				
		1800 mm [5.91ft]		>80	3000K	1970lm				
					4300K	2210lm				
					6500K	2040lm				
		2400 mm [7.87ft]		>90	3000K	1695lm				
					4300K	1900lm				
					6500K	1755lm				
	>80	3000K	2320lm							
		4300K	2600lm							
		6500K	2400lm							
	>90	3000K	1995lm							
		4300K	2235lm							
		6500K	2065lm							
	>80	3000K	3250lm							
		4300K	3640lm							
		6500K	3360lm							
	>90	3000K	2795lm							
		4300K	3130lm							
		6500K	2890lm							

Note:

1. The output data is based on the testing result of Ra80,4000k,white luminaires;
2. The tolerance of output data can be vary up to 10%;
3. The output data is typical value;
- 4.The luminous flux of black luminaire is 55% of white luminaire.

## Accessories Information

Picture	Section size	Name	Description	Model
		Splicing bar (external)	Size:L110*W15.5*H11.7mm [Inch size:L4.33"*W0.61"*H0.46"]	LX-EX-41
		Splicing bar (internal)	Material:SPCC Size:L135*W41.4*H42.2mm [Inch size:L5.31"*W1.63"*H1.66"]	LX-EX-46(N)
	/	Pendant cable (with junction box)	Junction box L80*W80*H30mm [Inch Size:L3.15"*W3.15"*H1.18"] Steel cable D1.5*2000/4000mm [Inch Size: D0.06"*78.74"/157.48"]	LX-PY-D
	/	Pendant cable	Steel cable D1.5*2000/4000mm [Inch Size: D0.06"*78.74"/157.48"]	LX-PN-D
		Track pendant rod	Material:Fe Size:φ13.5*(500/1000)mm [Inch size:φ0.53"*(19.69"/39.37")] Other:0.5-1.0/1.0-2.0M adjustable [19.69"-39.37"/39.37"-78.74"]	LX-PG-I
		Pendant installation clip	Material:PC Size:L31.6*W20mm*H5.8mm [Inch size:L1.24"*H0.79"*H0.23"]	LX-CP-44
	/	Surface mounted buckle	Size:L72*W54*H5.9mm (Inch Size:L2.83"*W2.13"*H0.23")	LX-CL-08
		L-shaped corner (60°)	Material:AL6063-T5 Size:L200*W173.2*H83.0mm [Inch size:L7.87"*W6.82"*H3.27"]	LX-L60-LS40

Picture	Section size	Name	Description	Model
		L-shaped corner (90°)	Material:AL6063-T5 Size:L200*W200*H83.0mm [Inch size:L7.87"*W7.87"*H3.27"]	LX-L90-LS40
		L-shaped corner (120°)	Material:AL6063-T5 Size:L200*W195.6*H83.0mm [Inch size:L7.87"*W7.70"*H3.27"]	LX-L120-LS40
		Y-shaped corner	Material:AL6063-T5 Size:L368.8*W319.4*H83.0mm [Inch size:L14.52"*W12.57"*H3.27"]	LX-Y120-LS40
		X-shaped corner	Material:AL6063-T5 Size:L400*W400*H83.0mm [Inch size:L15.75"*W15.75"*H3.27"]	LX-X90-LS40

## Dimensions



1199.5mm  
[47.22"]



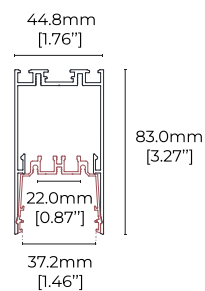
1497.5mm  
[58.96"]



1795.5mm  
[70.69"]



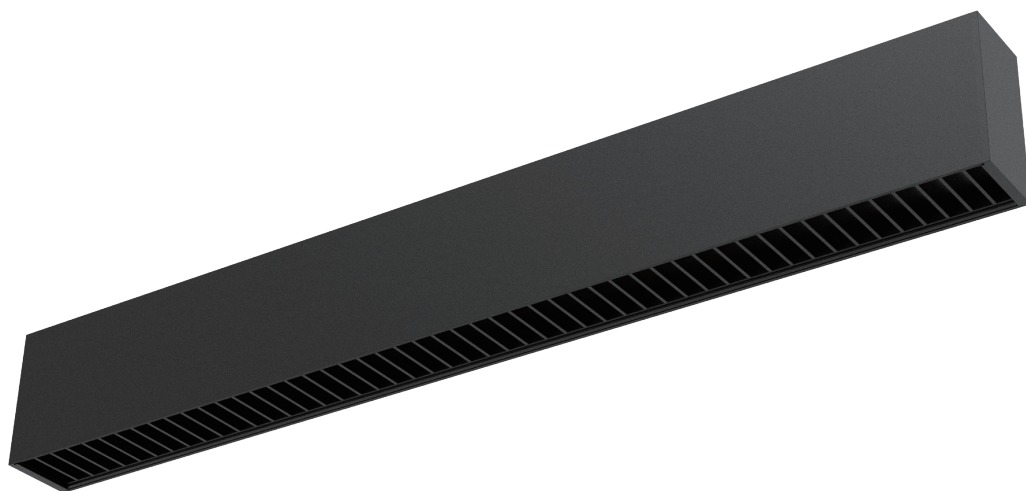
2391.5mm  
[94.15"]



## Version Type

### **【Normal】**

- 65lm/W
- Dimming method: Non / 1-10V / DALI+push



### **【Dial switch CCT control】**

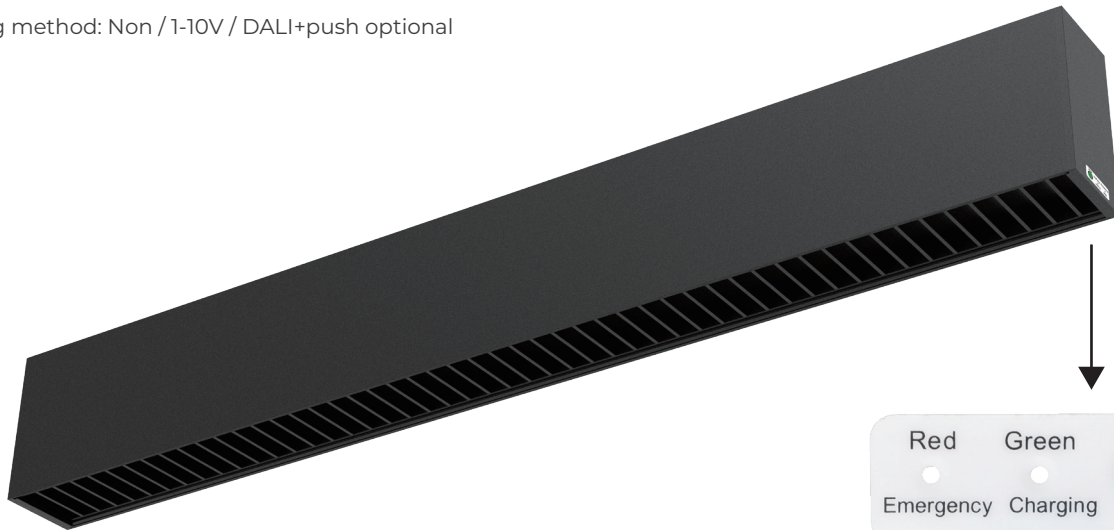
- Dimming method: Non/ 1-10V/ DALI+push optional
- 3000K/4300K/6500K 3-tier CCT adjustable, can achieve general lighting demands





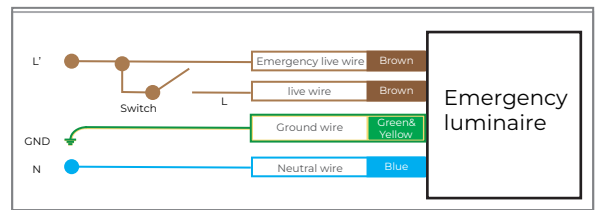
# Emergency model

· Dimming method: Non / 1-10V / DALI+push optional



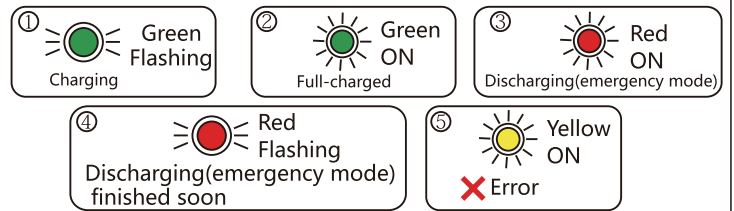
## Technical parameters:

- Input voltage: 220-240VAC/50-60Hz
- Input current/power: 50mA/4W
- Charging time: 24 hours
- Power(emergency mode): 4W constant power output
- Battery capacity: 7.4V 2500mAh
- Emergency time: ≥3 hours
- Emergency light efficiency: ≥65LM/W



## Indicator light introduction

- ① Green/flashing: Charging
- ② Green/on: Full-charged
- ③ Red/on: Discharging(emergency mode)
- ④ Red/flashing: Discharging(emergency mode) finished soon
- ⑤ Yellow/on: Error



## Test switch introduction

Press the test switch to confirm whether the emergency function is normal

