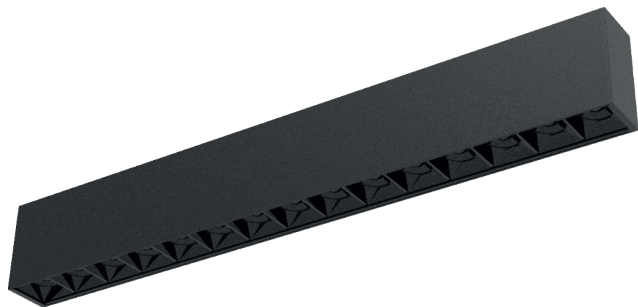


PROFIL LIGHT

LX-PL-LS40G



IP 20	CRI 80/90	SDCM <3 Step	AC220V ~240V
-----------------	---------------------	------------------------	------------------------



- Material : AL6063-T5,spraying surface/anodizing
- Coating : Silver anodized(RAL9006), Black(RAL9005), White(RAL9003)
- Length: 1200mm/1500mm/1800mm/2300mm optional (other length on request)
- Lighting direction: downward
- Grille angle : 12°/24°/38°/50° optional
- Light efficiency: 100 LM/W
- SDCM≤3 (ANSI)
- Installation method: Pendant, ceiling



Luminaire Parameters






Version	Model	Length	Input Voltage (V)	Max. Current (A)	Type Power (W)	Max. Power (W)	CRI	CCT	Lumen (LM)
Normal	LX-PL-LS40G-1200	1200mm	220VAC~ 240VAC	0.9	30	33	>80	2700K	2810lm
								3000K	2870lm
								3500K	2920lm
								4000K	3030lm
								5000K	3030lm
								6500K	3030lm
							>90	2700K	2360lm
								3000K	2400lm
								3500K	2470lm
								4000K	2580lm
								5000K	2580lm
								6500K	2580lm
Normal	LX-PL-LS40G-1500	1500mm	220VAC~ 240VAC	1.2	40	44	>80	2700K	3740lm
								3000K	3830lm
								3500K	3890lm
								4000K	4040lm
								5000K	4040lm
								6500K	4040lm
							>90	2700K	3200lm
								3000K	3270lm
								3500K	3320lm
								4000K	3450lm
								5000K	3450lm
								6500K	3450lm

Normal	LX-PL-LS40G-1800	1800mm	220VAC~ 240VAC	1.35	45	50	>80	2700K	4220lm
								3000K	4320lm
								3500K	4380lm
								4000K	4550lm
								5000K	4550lm
								6500K	4550lm
							>90	2700K	3550lm
								3000K	3610lm
								3500K	3710lm
								4000K	3880lm
								5000K	3880lm
								6500K	3880lm
Normal	LX-PL-LS40G-2300	2300mm	220VAC~ 240VAC	1.8	60	66	>80	2700K	5610lm
								3000K	5750lm
								3500K	5840lm
								4000K	6060lm
								5000K	6060lm
								6500K	6060lm
							>90	2700K	4720lm
								3000K	4810lm
								3500K	4950lm
								4000K	5170lm
								5000K	5170lm
								6500K	5170lm

Note:

1. The above parameters were tested based on 1.2M(3.94') standard products;
2. luminous flux is allowed to have a $\pm 10\%$ error range;
3. The above parameters are typical values.

Accessories Information

Picture	Section size	Name	Description	Model
	/	Surface mounted buckle	Size: L72*W54*H5.9mm (Inch Size: L2.83**W2.16**H0.23")	LX-CL-08
	/	Pendant cable 2m/4m	/	LX-PN-D
	/	Pendant cable 2m/4m (with junction box)	/	LX-PY-D
	/	Pendant rod	/	LX-PG-I
	/	Splicing bar	Size: L120*W13.8*H6.7mm [Inch size: L0.79**W0.54**H0.26"]	LX-EX-42

Dimensions

