

HIGHBAY



LX-HB-TS-LINE

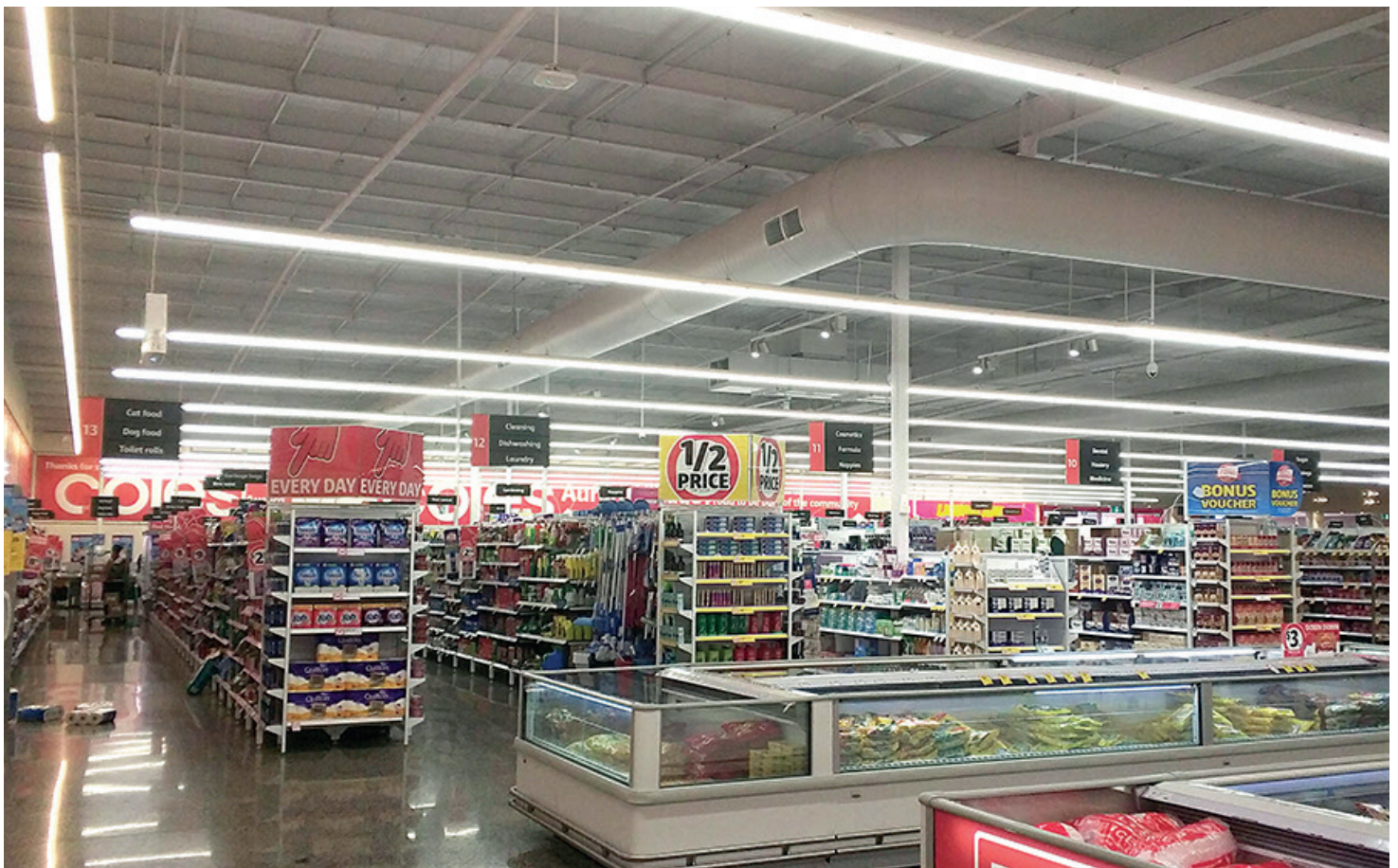
IP 20	PF 0.9	AC 220-240V	CRI >80/90		DALI	SDCM <6
-----------------	------------------	-----------------------	----------------------	---	-------------	-------------------

		TRIDONIC		RoHS		(L80B10) (L90B50)
---	---	-----------------	---	-------------	---	----------------------

TS-LINE

Perfectly supporting European power input voltage ranges, the CoreShine TS-Line LED Track Linear Light features a tiltable lighting panel, 3/4/6 wire track rail compatibility, customizable lighting effects, and multiple power channel selection, making it the ideal LED linear light fixture solution for various space lighting needs.

- 1500mm 35W/40W / 45W / 50W
- Tiltable lighting panel
- Sharp/Narrow/ Wide/ Double asymmetric /Flat
- Compatible with 3/4/6 wires track rail
- Ambient temperature : -25 - 40°C
- Storage Temperature : -40 - 85°C
- Application : Hypermarket,Supermarket,Retail stores,Showroom etc.



luxio
L I G H T I N G

www.luxio-lighting.com

References

Reference	Led Power	Luminous flux	CCT/K	Optics	IP Rating	Dimensions
LX-HB-TS-LINE	35W	5600 lm	2700K/3000K/3500K/4000K /5000K/5700K/6500K	30°, 60°, 90°, 120° , double asymmetrical, flat frosted	IP20	L1500*H60*W10mm
	40W	6400lm				
	45W	7200lm				
	50W	8000 lm				

Order code : Reference - Power - Luminous flux - CCT/K - Optic

Important : All the specification can be customized as per the project request .

Option

TS-line normal version



NO tiltable

TS-LINE K1



Single tilting
SINGLE TILTABLE, TILTING RANGE: 30°

TS-LINE K2



Twin wings tilting
TWIN TILTABLE WINGS, TILTING RANGE: 30°

TS-LINE K3



Central linear light with twin wings tilting

Browse through luxio-lighting similar products from the T series LED linear lamp family, and discover an array of exceptional offerings from our TS series LED Track Linear Light that will perfectly align with your needs.

Dimensions(mm)

